

IHC*easy* KIN Ready-To-Use IHC Kit

Catalog Number: **KHC2104**

General Information

Sample type:
FFPE tissue
Cited sample type:
Reactivity:
Human, Mouse, Rat
Cited Reactivity:

Assay type:
Immunohistochemistry
Primary antibody type:
Rabbit Polyclonal
Secondary antibody type:
Polymer-HRP-Goat anti-Rabbit

Kit Component

Component	Size	Concentration
Antigen Retrieval Buffer	100 mL	50×
Washing Buffer	100 mL ×2	20×
Blocking Buffer	5 mL	RTU
Primary Antibody	5 mL	RTU
Secondary Antibody	5 mL	RTU
Chromogen Component A	0.2 mL	RTU
Chromogen Component B	4 mL	RTU
Signal Enhancer	5 mL	RTU
Counter Staining Reagent	5 mL	RTU
Mounting Media	5 mL	RTU
Control Slide	1 slide (Optional)	FFPE
Datasheet	1 Copy	
Manual	1 Copy	

Storage Instructions

All the reagents are stored at 2-8°C. The kit is stable for 6 months from the date of receipt.

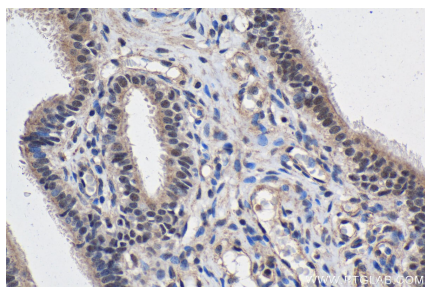
Background

KIN17 (also known as KIN) is an evolutionarily conserved zinc finger nuclear protein. It consists of three motifs, a zinc finger, a nuclear localization signal and a Kyprides-Onzonis-Woese motif that mediates transcription elongation. KIN17 is ubiquitously expressed in human tissues and participates in DNA replication, DNA repair and cell cycle progression. Emerging evidence has indicated the importance of KIN17 in the pathogenesis and progression of tumors.

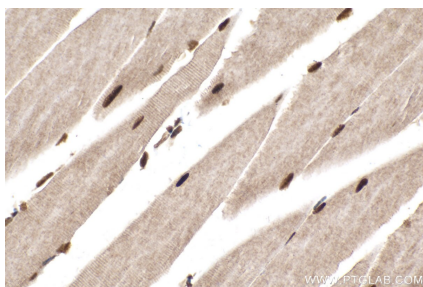
Synonyms

Binding to curved DNA, BTCD, DNA/RNA binding protein KIN17, KIN, KIN17

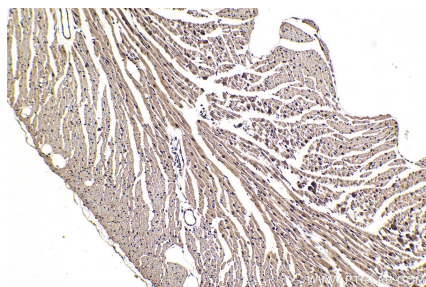
Selected Validation Data



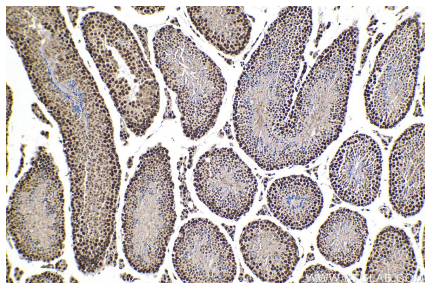
Immunohistochemical analysis of paraffin-embedded human ovary tumor tissue slide using KHC2104 (KIN IHC Kit).



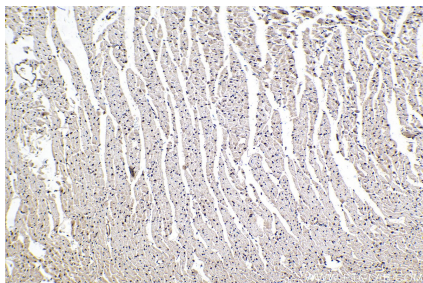
Immunohistochemical analysis of paraffin-embedded mouse skeletal muscle tissue slide using KHC2104 (KIN IHC Kit).



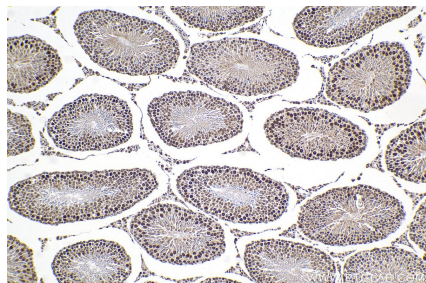
Immunohistochemical analysis of paraffin-embedded mouse heart tissue slide using KHC2104 (KIN IHC Kit).



Immunohistochemical analysis of paraffin-embedded mouse testis tissue slide using KHC2104 (KIN IHC Kit).



Immunohistochemical analysis of paraffin-embedded rat heart tissue slide using KHC2104 (KIN IHC Kit).



Immunohistochemical analysis of paraffin-embedded rat testis tissue slide using KHC2104 (KIN IHC Kit).