

# IHC*easy* PDE5A Ready-To-Use IHC Kit

Catalog Number: **KHC2126**

## General Information

Sample type:  
FFPE tissue  
Cited sample type:  
Reactivity:  
Human, Mouse  
Cited Reactivity:

Assay type:  
Immunohistochemistry  
Primary antibody type:  
Rabbit Polyclonal  
Secondary antibody type:  
Polymer-HRP-Goat anti-Rabbit

## Kit Component

Component	Size	Concentration
Antigen Retrieval Buffer	100 mL	50×
Washing Buffer	100 mL ×2	20×
Blocking Buffer	5 mL	RTU
Primary Antibody	5 mL	RTU
Secondary Antibody	5 mL	RTU
Chromogen Component A	0.2 mL	RTU
Chromogen Component B	4 mL	RTU
Signal Enhancer	5 mL	RTU
Counter Staining Reagent	5 mL	RTU
Mounting Media	5 mL	RTU
Control Slide	1 slide (Optional)	FFPE
Datasheet	1 Copy	
Manual	1 Copy	

## Storage Instructions

All the reagents are stored at 2-8°C. The kit is stable for 6 months from the date of receipt.

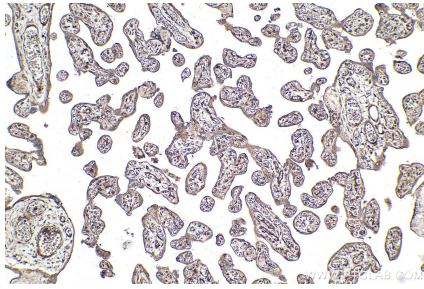
## Background

PDE5A (cGMP-binding cGMP-specific phosphodiesterase) plays a role in signal transduction by regulating the intracellular concentration of cyclic nucleotides. This phosphodiesterase catalyzes the specific hydrolysis of cGMP to 5'-GMP.

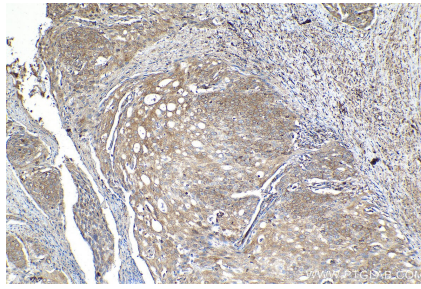
## Synonyms

CGB PDE, CN5A, PDE5, PDE5A, PDE5A1, phosphodiesterase 5A, cGMP

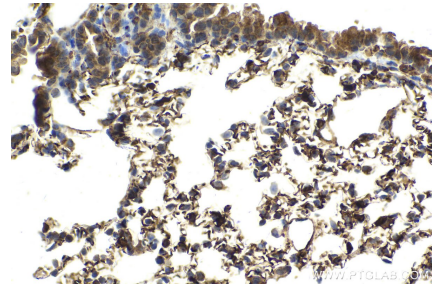
## Selected Validation Data



Immunohistochemical analysis of paraffin-embedded human placenta tissue slide using KHC2126 (PDE5A IHC Kit).



Immunohistochemical analysis of paraffin-embedded human cervical cancer tissue slide using KHC2126 (PDE5A IHC Kit).



Immunohistochemical analysis of paraffin-embedded mouse lung tissue slide using KHC2126 (PDE5A IHC Kit).