

# IHC*easy* SDPR Ready-To-Use IHC Kit

Catalog Number: **KHC2147**

## General Information

Sample type:  
FFPE tissue  
Cited sample type:  
Reactivity:  
Human, Mouse, Rat  
Cited Reactivity:

Assay type:  
Immunohistochemistry  
Primary antibody type:  
Rabbit Polyclonal  
Secondary antibody type:  
Polymer-HRP-Goat anti-Rabbit

## Kit Component

Component	Size	Concentration
Antigen Retrieval Buffer	100 mL	50×
Washing Buffer	100 mL ×2	20×
Blocking Buffer	5 mL	RTU
Primary Antibody	5 mL	RTU
Secondary Antibody	5 mL	RTU
Chromogen Component A	0.2 mL	RTU
Chromogen Component B	4 mL	RTU
Signal Enhancer	5 mL	RTU
Counter Staining Reagent	5 mL	RTU
Mounting Media	5 mL	RTU
Control Slide	1 slide (Optional)	FFPE
Datasheet	1 Copy	
Manual	1 Copy	

## Storage Instructions

All the reagents are stored at 2-8°C. The kit is stable for 6 months from the date of receipt.

## Background

Serum deprivation-response protein(SDRP), a substrate of protein kinase C, is a member of a group of proteins that bind to phosphatidylserine in a calcium-dependent manner. SDPR may participate in the generation or stabilization of membrane curvature. SDPR is highly expressed in heart and lung, and low in brain,kidney, liver, pancreas, placenta and skeletal muscle.

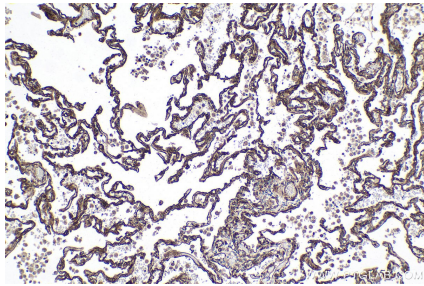
## Synonyms

Cavin 2, PS p68, SDPR, SDR

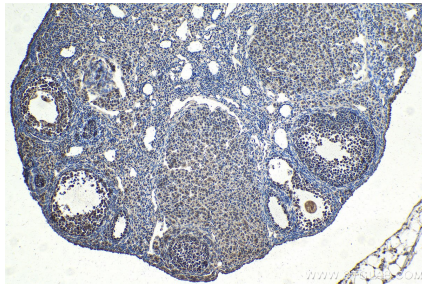
For technical support and original validation data for this product please contact:  
T: 1 (888) 4PTGLAB (1-888-478-4522) (toll free in USA), or 1(312) 455-8498 (outside USA)  
E: [proteintech@ptglab.com](mailto:proteintech@ptglab.com)  
W: [ptglab.com](http://ptglab.com)

This product is exclusively available under Proteintech Group brand and is not available to purchase from any other manufacturer.

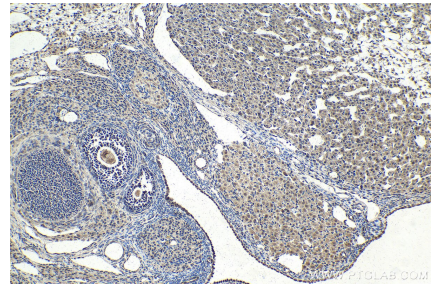
## Selected Validation Data



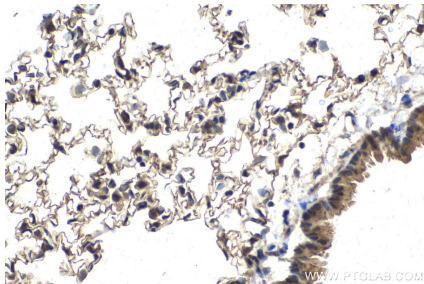
Immunohistochemical analysis of paraffin-embedded human lung tissue slide using KHC2147 (SDPR IHC Kit).



Immunohistochemical analysis of paraffin-embedded mouse ovary tissue slide using KHC2147 (SDPR IHC Kit).



Immunohistochemical analysis of paraffin-embedded rat ovary tissue slide using KHC2147 (SDPR IHC Kit).



Immunohistochemical analysis of paraffin-embedded rat lung tissue slide using KHC2147 (SDPR IHC Kit).