

IHC*easy* BCR Ready-To-Use IHC Kit

Catalog Number: **KHC2181**

General Information

Sample type:
FFPE tissue
Cited sample type:
Reactivity:
Human, Mouse, Rat
Cited Reactivity:

Assay type:
Immunohistochemistry
Primary antibody type:
Rabbit Polyclonal
Secondary antibody type:
Polymer-HRP-Goat anti-Rabbit

Kit Component

Component	Size	Concentration
Antigen Retrieval Buffer	100 mL	50×
Washing Buffer	100 mL ×2	20×
Blocking Buffer	5 mL	RTU
Primary Antibody	5 mL	RTU
Secondary Antibody	5 mL	RTU
Chromogen Component A	0.2 mL	RTU
Chromogen Component B	4 mL	RTU
Signal Enhancer	5 mL	RTU
Counter Staining Reagent	5 mL	RTU
Mounting Media	5 mL	RTU
Control Slide	1 slide (Optional)	FFPE
Datasheet	1 Copy	
Manual	1 Copy	

Storage Instructions

All the reagents are stored at 2-8°C. The kit is stable for 6 months from the date of receipt.

Background

The Bcr gene, mapping on chromosome22, was originally identified by its presence in the chimeric Bcr-Abl oncogene. The Bcr gene encodes for the break point cluster region protein(Bcr). Although the BCR-ABL fusion protein has been extensively studied, the function of the normal BCR gene product is not clear. The protein has serine/threonine kinase activity and is a GTPase-activating protein for RAC1 and CDC42. A chromosomal aberration involving BCR has been found in patients with chronic myeloid leukemia.

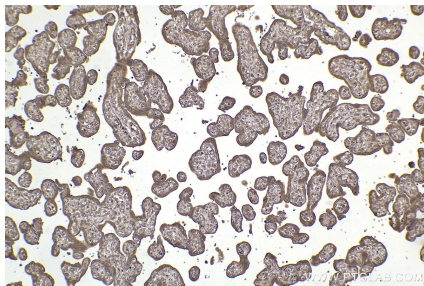
Synonyms

Renal carcinoma antigen NY-REN-26, EC:2.7.11.1, breakpoint cluster region, BCR1, BCR 1

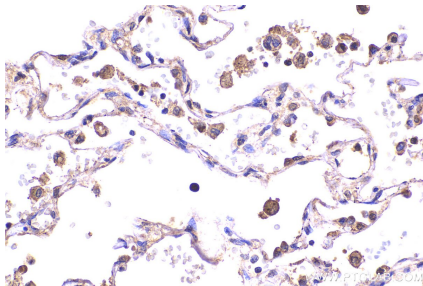
For technical support and original validation data for this product please contact:
T: 1 (888) 4PTGLAB (1-888-478-4522) (toll free in USA), or 1(312) 455-8498 (outside USA)
E: proteintech@ptglab.com
W: ptglab.com

This product is exclusively available under Proteintech Group brand and is not available to purchase from any other manufacturer.

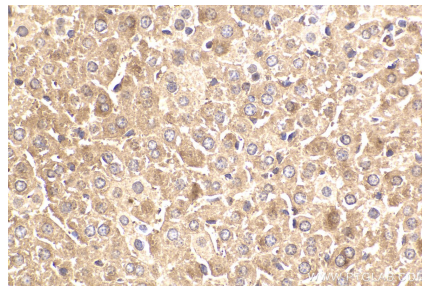
Selected Validation Data



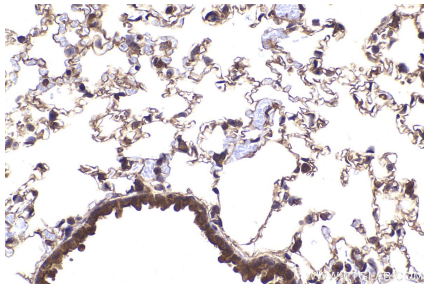
Immunohistochemical analysis of paraffin-embedded human placenta tissue slide using KHC2181 (BCR IHC Kit).



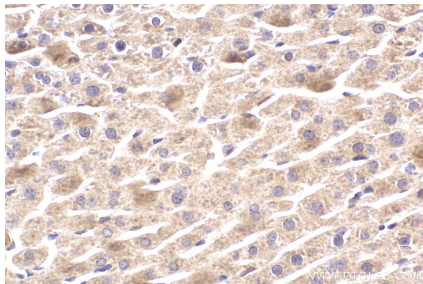
Immunohistochemical analysis of paraffin-embedded human lung tissue slide using KHC2181 (BCR IHC Kit).



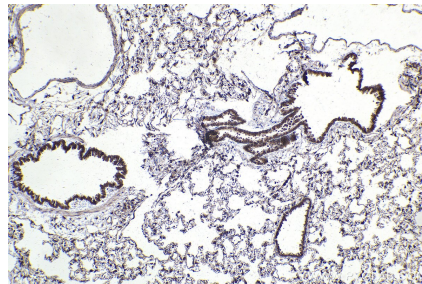
Immunohistochemical analysis of paraffin-embedded mouse liver tissue slide using KHC2181 (BCR IHC Kit).



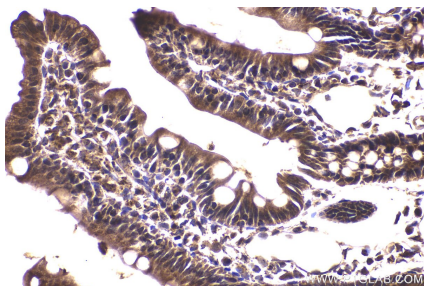
Immunohistochemical analysis of paraffin-embedded mouse lung tissue slide using KHC2181 (BCR IHC Kit).



Immunohistochemical analysis of paraffin-embedded rat liver tissue slide using KHC2181 (BCR IHC Kit).



Immunohistochemical analysis of paraffin-embedded rat lung tissue slide using KHC2181 (BCR IHC Kit).



Immunohistochemical analysis of paraffin-embedded rat small intestine tissue slide using KHC2181 (BCR IHC Kit).