

# IHC*easy* UQCRC2 Ready-To-Use IHC Kit

Catalog Number: **KHC2209**

## General Information

Sample type:  
FFPE tissue  
Cited sample type:  
Reactivity:  
Human, Mouse, Rat  
Cited Reactivity:

Assay type:  
Immunohistochemistry  
Primary antibody type:  
Mouse Monoclonal  
Secondary antibody type:  
Polymer-HRP-Goat anti-Mouse

## Kit Component

Component	Size	Concentration
Antigen Retrieval Buffer	100 mL	50×
Washing Buffer	100 mL ×2	20×
Blocking Buffer	5 mL	RTU
Primary Antibody	5 mL	RTU
Secondary Antibody	5 mL	RTU
Chromogen Component A	0.2 mL	RTU
Chromogen Component B	4 mL	RTU
Signal Enhancer	5 mL	RTU
Counter Staining Reagent	5 mL	RTU
Mounting Media	5 mL	RTU
Control Slide	1 slide (Optional)	FFPE
Datasheet	1 Copy	
Manual	1 Copy	

## Storage Instructions

All the reagents are stored at 2-8°C. The kit is stable for 6 months from the date of receipt.

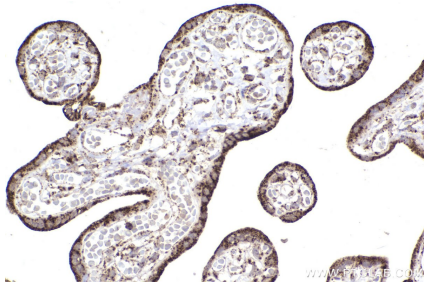
## Background

UQCRC2(Ubiquinol-cytochrome-c reductase complex core protein 2) is also named as complex III subunit 2, core protein II and belongs to the UQCRC2/QCR2 subfamily. The bc1 complex contains 11 subunits: 3 respiratory subunits (cytochrome b, cytochrome c1 and Rieske/UQCRFS1), 2 core proteins (UQCRC1/QCR1 and UQCRC2/QCR2) and 6 low-molecular weight proteins (UQCRH/QCR6, UQCRB/QCR7, UQCRCQ/QCR8, UQCR10/QCR9, UQCR11/QCR10 and a cleavage product of Rieske/UQCRFS1) and is part of the mitochondrial respiratory chain. This protein distributes in mitochondrion inner membrane, peripheral membrane protein and matrix side.

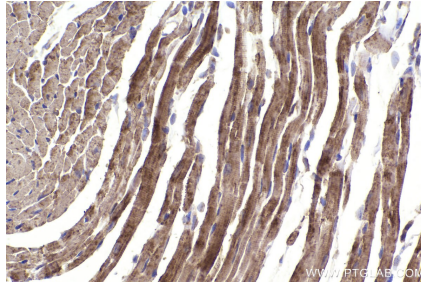
For technical support and original validation data for this product please contact:  
T: 1 (888) 4PTGLAB (1-888-478-4522) (toll free in USA), or 1(312) 455-8498 (outside USA)  
E: [proteintech@ptglab.com](mailto:proteintech@ptglab.com)  
W: [ptglab.com](http://ptglab.com)

This product is exclusively available under Proteintech Group brand and is not available to purchase from any other manufacturer.

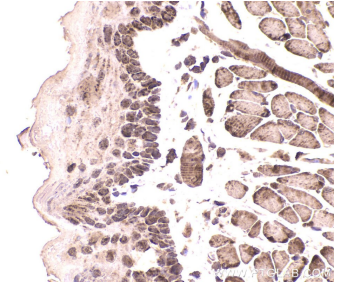
## Selected Validation Data



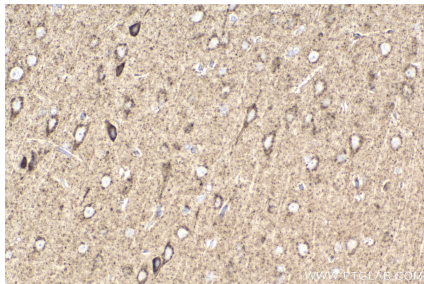
Immunohistochemical analysis of paraffin-embedded human placenta tissue slide using KHC2209 (UQCRC2 IHC Kit).



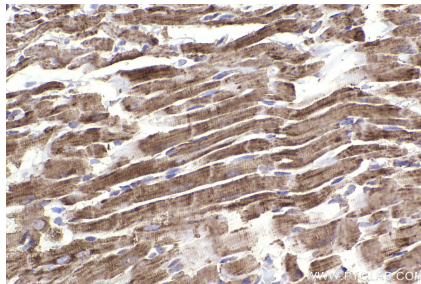
Immunohistochemical analysis of paraffin-embedded mouse heart tissue slide using KHC2209 (UQCRC2 IHC Kit).



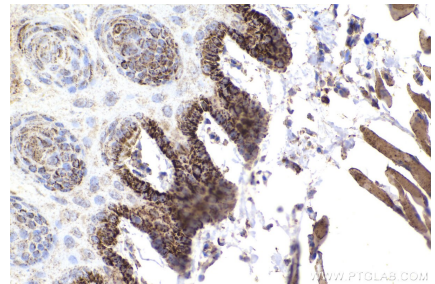
Immunohistochemical analysis of paraffin-embedded mouse tongue tissue slide using KHC2209 (UQCRC2 IHC Kit).



Immunohistochemical analysis of paraffin-embedded rat brain tissue slide using KHC2209 (UQCRC2 IHC Kit).



Immunohistochemical analysis of paraffin-embedded rat heart tissue slide using KHC2209 (UQCRC2 IHC Kit).



Immunohistochemical analysis of paraffin-embedded rat tongue tissue slide using KHC2209 (UQCRC2 IHC Kit).