

# IHC*easy* S100A2 Ready-To-Use IHC Kit

Catalog Number: **KHC2219**

## General Information

Sample type:  
FFPE tissue  
Cited sample type:  
Reactivity:  
Human, Mouse, Rat  
Cited Reactivity:

Assay type:  
Immunohistochemistry  
Primary antibody type:  
Rabbit Polyclonal  
Secondary antibody type:  
Polymer-HRP-Goat anti-Rabbit

## Kit Component

Component	Size	Concentration
Antigen Retrieval Buffer	100 mL	50×
Washing Buffer	100 mL ×2	20×
Blocking Buffer	5 mL	RTU
Primary Antibody	5 mL	RTU
Secondary Antibody	5 mL	RTU
Chromogen Component A	0.2 mL	RTU
Chromogen Component B	4 mL	RTU
Signal Enhancer	5 mL	RTU
Counter Staining Reagent	5 mL	RTU
Mounting Media	5 mL	RTU
Control Slide	1 slide (Optional)	FFPE
Datasheet	1 Copy	
Manual	1 Copy	

## Storage Instructions

All the reagents are stored at 2-8°C. The kit is stable for 6 months from the date of receipt.

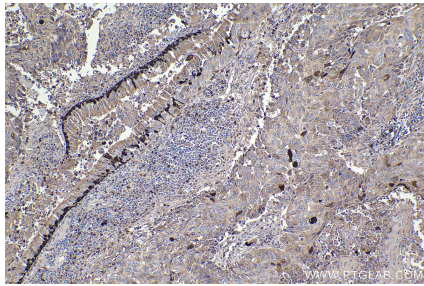
## Background

S100A2 (S100 calcium-binding protein A2) is also named as S100L and CAN19. S100A2, a member of the S100 protein family, is more highly expressed in endometrial carcinoma tissues than in normal tissues and was correlated with worse survival. S100A2 has a tumor suppressor function. S100A2 is highly upregulated in the epidermis under inflammatory conditions and in drug eruptions, in addition to inflammatory skin diseases such as atopic dermatitis and psoriasis.

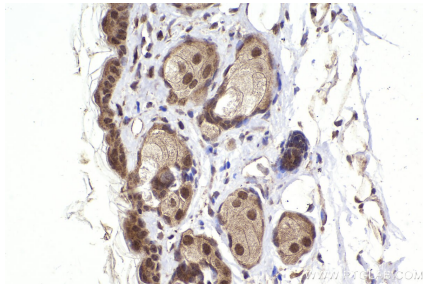
For technical support and original validation data for this product please contact:  
T: 1 (888) 4PTGLAB (1-888-478-4522) (toll free in USA), or 1(312) 455-8498 (outside USA)  
E: [proteintech@ptglab.com](mailto:proteintech@ptglab.com)  
W: [ptglab.com](http://ptglab.com)

This product is exclusively available under Proteintech Group brand and is not available to purchase from any other manufacturer.

## Selected Validation Data



Immunohistochemical analysis of paraffin-embedded human lung cancer tissue slide using KHC2219 (S100A2 IHC Kit).



Immunohistochemical analysis of paraffin-embedded mouse skin tissue slide using KHC2219 (S100A2 IHC Kit).



Immunohistochemical analysis of paraffin-embedded rat skin tissue slide using KHC2219 (S100A2 IHC Kit).