

# IHC*easy* HSPA1L Ready-To-Use IHC Kit

Catalog Number: **KHC2243**

## General Information

Sample type:  
FFPE tissue  
Cited sample type:  
Reactivity:  
Human, Mouse, Rat  
Cited Reactivity:

Assay type:  
Immunohistochemistry  
Primary antibody type:  
Mouse Monoclonal  
Secondary antibody type:  
Polymer-HRP-Goat anti-Mouse

## Kit Component

Component	Size	Concentration
Antigen Retrieval Buffer	100 mL	50×
Washing Buffer	100 mL ×2	20×
Blocking Buffer	5 mL	RTU
Primary Antibody	5 mL	RTU
Secondary Antibody	5 mL	RTU
Chromogen Component A	0.2 mL	RTU
Chromogen Component B	4 mL	RTU
Signal Enhancer	5 mL	RTU
Counter Staining Reagent	5 mL	RTU
Mounting Media	5 mL	RTU
Control Slide	1 slide (Optional)	FFPE
Datasheet	1 Copy	
Manual	1 Copy	

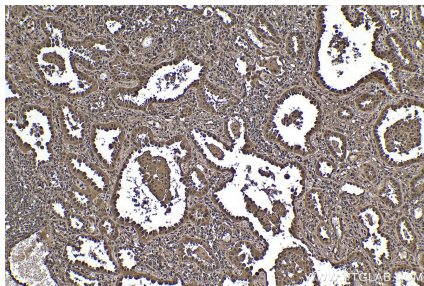
## Storage Instructions

All the reagents are stored at 2-8°C. The kit is stable for 6 months from the date of receipt.

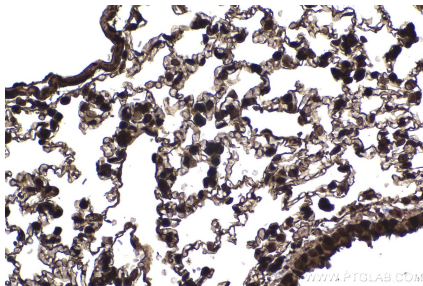
## Background

HSPA1L (Hsp70-like protein 1, also known as HSP70-hom) is a member of Hsp70 family of heat shock proteins. Recently it has been reported that HSPA1L can interact with TLR4, activate dendritic cells and induce Th1 Response.

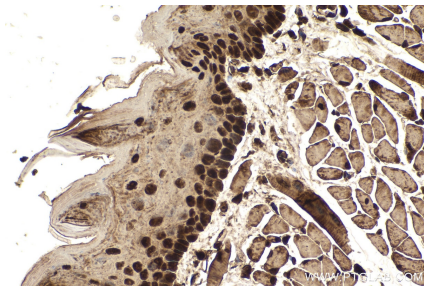
## Selected Validation Data



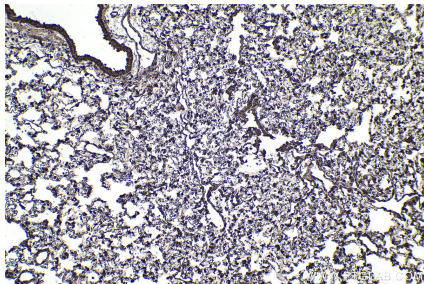
Immunohistochemical analysis of paraffin-embedded human lung cancer tissue slide using KHC2243 (HSPA1L IHC Kit).



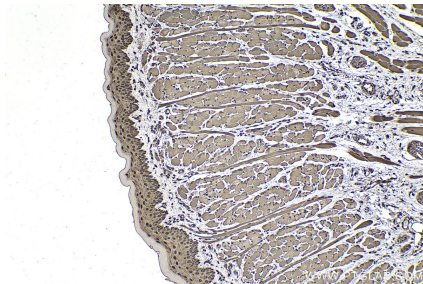
Immunohistochemical analysis of paraffin-embedded mouse lung tissue slide using KHC2243 (HSPA1L IHC Kit).



Immunohistochemical analysis of paraffin-embedded mouse tongue tissue slide using KHC2243 (HSPA1L IHC Kit).



Immunohistochemical analysis of paraffin-embedded rat lung tissue slide using KHC2243 (HSPA1L IHC Kit).



Immunohistochemical analysis of paraffin-embedded rat tongue tissue slide using KHC2243 (HSPA1L IHC Kit).