

IHC*easy* CSK Ready-To-Use IHC Kit

Catalog Number: **KHC2259**

General Information

Sample type:
FFPE tissue
Cited sample type:
Reactivity:
Human, Mouse, Rat
Cited Reactivity:

Assay type:
Immunohistochemistry
Primary antibody type:
Mouse Monoclonal
Secondary antibody type:
Polymer-HRP-Goat anti-Mouse

Kit Component

Component	Size	Concentration
Antigen Retrieval Buffer	100 mL	50×
Washing Buffer	100 mL ×2	20×
Blocking Buffer	5 mL	RTU
Primary Antibody	5 mL	RTU
Secondary Antibody	5 mL	RTU
Chromogen Component A	0.2 mL	RTU
Chromogen Component B	4 mL	RTU
Signal Enhancer	5 mL	RTU
Counter Staining Reagent	5 mL	RTU
Mounting Media	5 mL	RTU
Control Slide	1 slide (Optional)	FFPE
Datasheet	1 Copy	
Manual	1 Copy	

Storage Instructions

All the reagents are stored at 2-8°C. The kit is stable for 6 months from the date of receipt.

Background

CSK(Tyrosine-protein kinase CSK) is also named as C-Src kinase, protein-tyrosine kinase CYL and belongs to the protein kinase superfamily. Csk is a non-receptor tyrosine kinase. It contains the SH3 and SH2 domains in its N-terminus and a kinase domain in its C-terminus. It negatively regulates the kinase activity of SFKs and plays an important role in physiological functions via signaling pathways for cell proliferation, differentiation, adhesion, and migration. Csk may play a role in tumor suppression by inhibiting the oncogenic activity of SFKs. Indeed, overexpression of Csk can inhibit tumor growth of human colon cancer cells.

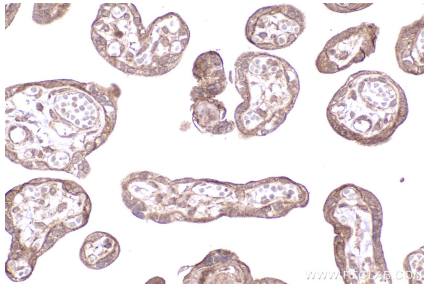
Synonyms

Tyrosine-protein kinase CSK, Protein-tyrosine kinase CYL, EC:2.7.10.2, C-Src kinase, Csk A

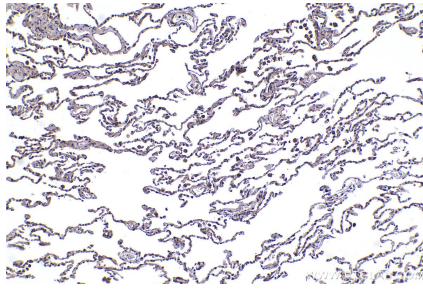
For technical support and original validation data for this product please contact:
T: 1 (888) 4PTGLAB (1-888-478-4522) (toll free in USA), or 1(312) 455-8498 (outside USA)
E: proteintech@ptglab.com
W: ptglab.com

This product is exclusively available under Proteintech Group brand and is not available to purchase from any other manufacturer.

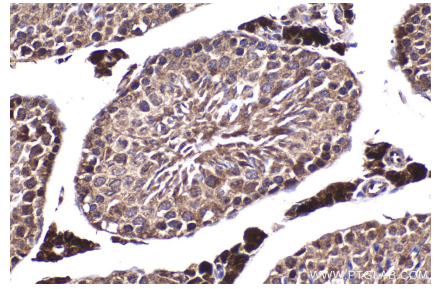
Selected Validation Data



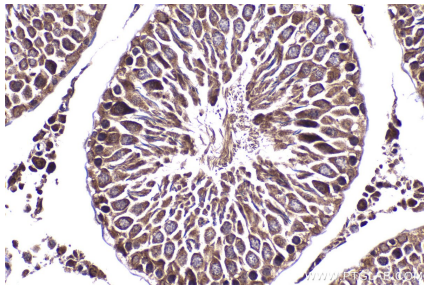
Immunohistochemical analysis of paraffin-embedded human placenta tissue slide using KHC2259 (CSK IHC Kit).



Immunohistochemical analysis of paraffin-embedded human lung tissue slide using KHC2259 (CSK IHC Kit).



Immunohistochemical analysis of paraffin-embedded mouse testis tissue slide using KHC2259 (CSK IHC Kit).



Immunohistochemical analysis of paraffin-embedded rat testis tissue slide using KHC2259 (CSK IHC Kit).