

# IHC*easy* BRCC3 Ready-To-Use IHC Kit

Catalog Number: **KHC2278**

## General Information

Sample type:  
FFPE tissue  
Cited sample type:  
Reactivity:  
Human, Mouse  
Cited Reactivity:

Assay type:  
Immunohistochemistry  
Primary antibody type:  
Rabbit Polyclonal  
Secondary antibody type:  
Polymer-HRP-Goat anti-Rabbit

## Kit Component

Component	Size	Concentration
Antigen Retrieval Buffer	100 mL	50×
Washing Buffer	100 mL ×2	20×
Blocking Buffer	5 mL	RTU
Primary Antibody	5 mL	RTU
Secondary Antibody	5 mL	RTU
Chromogen Component A	0.2 mL	RTU
Chromogen Component B	4 mL	RTU
Signal Enhancer	5 mL	RTU
Counter Staining Reagent	5 mL	RTU
Mounting Media	5 mL	RTU
Control Slide	1 slide (Optional)	FFPE
Datasheet	1 Copy	
Manual	1 Copy	

## Storage Instructions

All the reagents are stored at 2-8°C. The kit is stable for 6 months from the date of receipt.

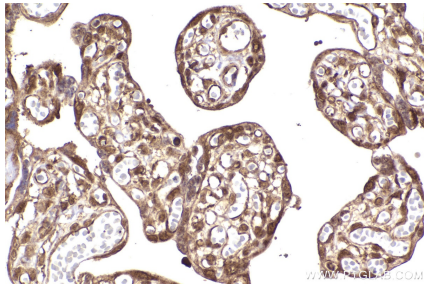
## Background

BRCA1-BRCA2-containing complex subunit 3 (BRCC3), a Lys-63-specific deubiquitinase, is a member of the JAMM/MPN family of zinc metalloproteases. BRCC3 have been shown to promote the inflammasome activation by deubiquitinating NOD-like receptor containing pyrin domain 3 (NLRP3). BRCC3 is associated with G2/M arrest in breast cancer cells and DNA damage. The expression of BRCC3 is associated with increased cell proliferation.

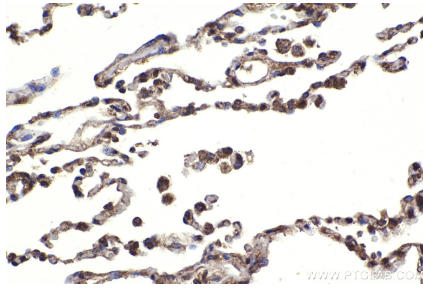
## Synonyms

C6.1A, BRISC complex subunit BRCC36, BRCC36, BRCA1-A complex subunit BRCC36, BRCA1/BRCA2-containing complex subunit 36

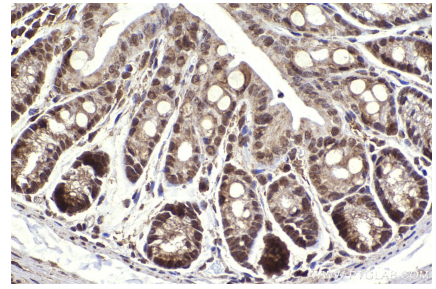
## Selected Validation Data



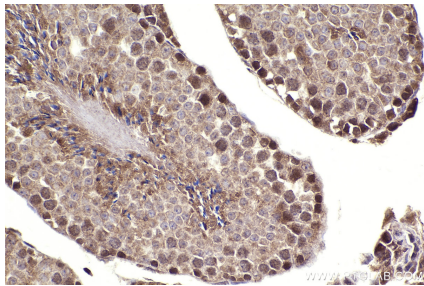
Immunohistochemical analysis of paraffin-embedded human placenta tissue slide using KHC2278 (BRCC3 IHC Kit).



Immunohistochemical analysis of paraffin-embedded human lung tissue slide using KHC2278 (BRCC3 IHC Kit).



Immunohistochemical analysis of paraffin-embedded mouse colon tissue slide using KHC2278 (BRCC3 IHC Kit).



Immunohistochemical analysis of paraffin-embedded mouse testis tissue slide using KHC2278 (BRCC3 IHC Kit).