

# IHC*easy* CSNK1E Ready-To-Use IHC Kit

Catalog Number: **KHC2289**

## General Information

Sample type:  
FFPE tissue  
Cited sample type:  
Reactivity:  
Human, Mouse, Rat  
Cited Reactivity:

Assay type:  
Immunohistochemistry  
Primary antibody type:  
Rabbit Polyclonal  
Secondary antibody type:  
Polymer-HRP-Goat anti-Rabbit

## Kit Component

Component	Size	Concentration
Antigen Retrieval Buffer	100 mL	50×
Washing Buffer	100 mL ×2	20×
Blocking Buffer	5 mL	RTU
Primary Antibody	5 mL	RTU
Secondary Antibody	5 mL	RTU
Chromogen Component A	0.2 mL	RTU
Chromogen Component B	4 mL	RTU
Signal Enhancer	5 mL	RTU
Counter Staining Reagent	5 mL	RTU
Mounting Media	5 mL	RTU
Control Slide	1 slide (Optional)	FFPE
Datasheet	1 Copy	
Manual	1 Copy	

## Storage Instructions

All the reagents are stored at 2-8°C. The kit is stable for 6 months from the date of receipt.

## Background

CSNK1E(Casein kinase I isoform epsilon) is also named as CKIε, CKI-epsilon and belongs to the casein kinase I subfamily. It plays a significant role in delaying the negative feedback signal within the transcription-translation-based autoregulatory loop that composes the core of the circadian mechanism and makes an ideal target for pharmaceutical compounds influencing circadian rhythms, sleep, and jet lag, as well as other physiologic and metabolic processes under circadian regulation.

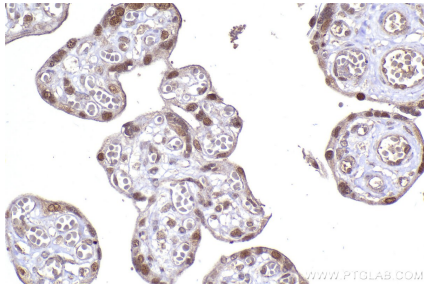
## Synonyms

EC:2.7.11.1, CKI-epsilon, CKIε, CKI epsilon

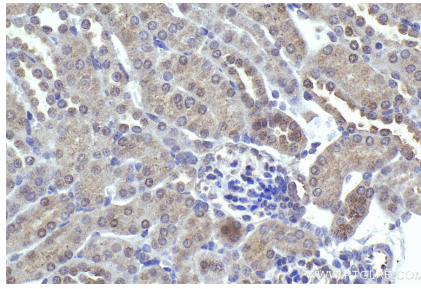
For technical support and original validation data for this product please contact:  
T: 1 (888) 4PTGLAB (1-888-478-4522) (toll free in USA), or 1(312) 455-8498 (outside USA)  
E: [proteintech@ptglab.com](mailto:proteintech@ptglab.com)  
W: [ptglab.com](http://ptglab.com)

This product is exclusively available under Proteintech Group brand and is not available to purchase from any other manufacturer.

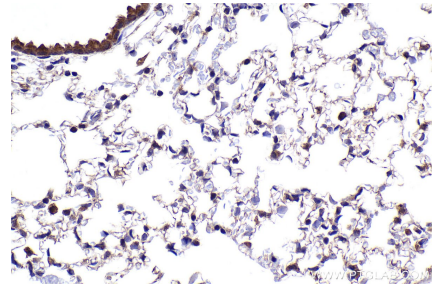
## Selected Validation Data



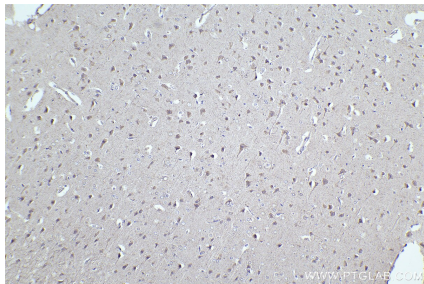
Immunohistochemical analysis of paraffin-embedded human placenta tissue slide using KHC2289 (CSNK1E IHC Kit).



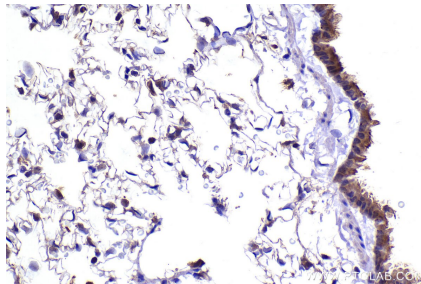
Immunohistochemical analysis of paraffin-embedded mouse kidney tissue slide using KHC2289 (CSNK1E IHC Kit).



Immunohistochemical analysis of paraffin-embedded mouse lung tissue slide using KHC2289 (CSNK1E IHC Kit).



Immunohistochemical analysis of paraffin-embedded rat brain tissue slide using KHC2289 (CSNK1E IHC Kit).



Immunohistochemical analysis of paraffin-embedded rat lung tissue slide using KHC2289 (CSNK1E IHC Kit).