

IHC*easy* GSK3A Ready-To-Use IHC Kit

Catalog Number: **KHC2292**

General Information

Sample type:
FFPE tissue
Cited sample type:
Reactivity:
Human, Mouse, Rat
Cited Reactivity:

Assay type:
Immunohistochemistry
Primary antibody type:
Rabbit Polyclonal
Secondary antibody type:
Polymer-HRP-Goat anti-Rabbit

Kit Component

| Component | Size | Concentration |
|--------------------------|--------------------|---------------|
| Antigen Retrieval Buffer | 100 mL | 50× |
| Washing Buffer | 100 mL ×2 | 20× |
| Blocking Buffer | 5 mL | RTU |
| Primary Antibody | 5 mL | RTU |
| Secondary Antibody | 5 mL | RTU |
| Chromogen Component A | 0.2 mL | RTU |
| Chromogen Component B | 4 mL | RTU |
| Signal Enhancer | 5 mL | RTU |
| Counter Staining Reagent | 5 mL | RTU |
| Mounting Media | 5 mL | RTU |
| Control Slide | 1 slide (Optional) | FFPE |
| Datasheet | 1 Copy | |
| Manual | 1 Copy | |

Storage Instructions

All the reagents are stored at 2-8°C. The kit is stable for 6 months from the date of receipt.

Background

GSK3A (glycogen synthase kinase 3 alpha), one of the two functional isoforms encoded by the GSK3 gene, is a serine/threonine protein kinase that is involved in cell-cycle progression, differentiation, and apoptosis. GSK3A acts as a tumor suppressor and has important roles in acute myeloid leukemia (AML), prostate cancer, and pancreatic cancer. GSK3A is also known to interact with beta-amyloid and tau, proteins that aggregate in areas of the neuronal system as part of the pathology of neurodegenerative diseases such as Alzheimer's disease.

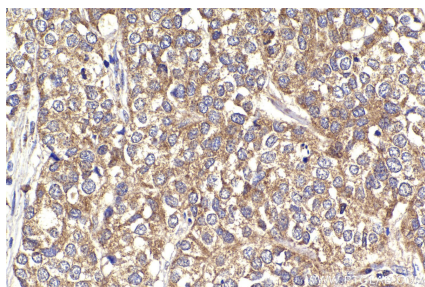
Synonyms

Serine/threonine-protein kinase GSK3A, GSK-3 alpha, GSK 3 alpha, Glycogen synthase kinase-3 alpha, EC:2.7.11.26

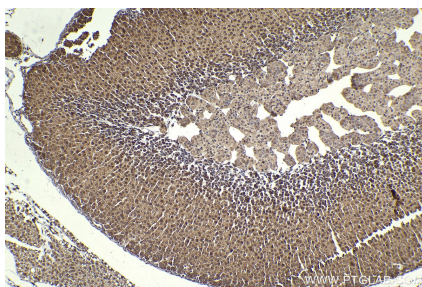
For technical support and original validation data for this product please contact:
T: 1 (888) 4PTGLAB (1-888-478-4522) (toll free in USA), or 1(312) 455-8498 (outside USA)
E: proteintech@ptglab.com
W: ptglab.com

This product is exclusively available under Proteintech Group brand and is not available to purchase from any other manufacturer.

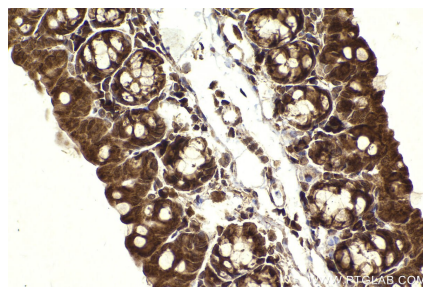
Selected Validation Data



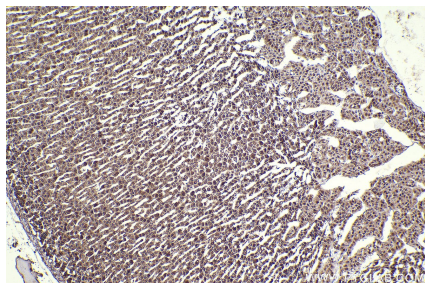
Immunohistochemical analysis of paraffin-embedded human stomach cancer tissue slide using KHC2292 (GSK3A IHC Kit).



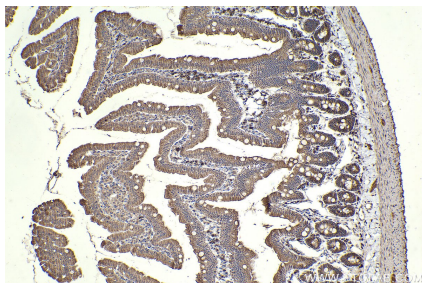
Immunohistochemical analysis of paraffin-embedded mouse adrenal gland tissue slide using KHC2292 (GSK3A IHC Kit).



Immunohistochemical analysis of paraffin-embedded mouse small intestine tissue slide using KHC2292 (GSK3A IHC Kit).



Immunohistochemical analysis of paraffin-embedded rat adrenal gland tissue slide using KHC2292 (GSK3A IHC Kit).



Immunohistochemical analysis of paraffin-embedded rat small intestine tissue slide using KHC2292 (GSK3A IHC Kit).