

IHC*easy* RAB9A Ready-To-Use IHC Kit

Catalog Number: **KHC2301**

General Information

Sample type:
FFPE tissue
Cited sample type:
Reactivity:
Human, Mouse, Rat
Cited Reactivity:

Assay type:
Immunohistochemistry
Primary antibody type:
Rabbit Polyclonal
Secondary antibody type:
Polymer-HRP-Goat anti-Rabbit

Kit Component

Component	Size	Concentration
Antigen Retrieval Buffer	100 mL	50×
Washing Buffer	100 mL ×2	20×
Blocking Buffer	5 mL	RTU
Primary Antibody	5 mL	RTU
Secondary Antibody	5 mL	RTU
Chromogen Component A	0.2 mL	RTU
Chromogen Component B	4 mL	RTU
Signal Enhancer	5 mL	RTU
Counter Staining Reagent	5 mL	RTU
Mounting Media	5 mL	RTU
Control Slide	1 slide (Optional)	FFPE
Datasheet	1 Copy	
Manual	1 Copy	

Storage Instructions

All the reagents are stored at 2-8°C. The kit is stable for 6 months from the date of receipt.

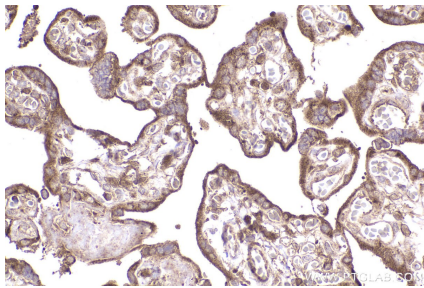
Background

RAB9A belongs to the small GTPase superfamily, the members of which play an important role in regulating vesicular trafficking and reside in specific intracellular compartments. RAB9A has been localized to components of the endocytic/exocytic pathway and has been implicated in recycling of membrane receptors, such as mannose 6-phosphate receptor, from early endosomes to the trans Golgi network.

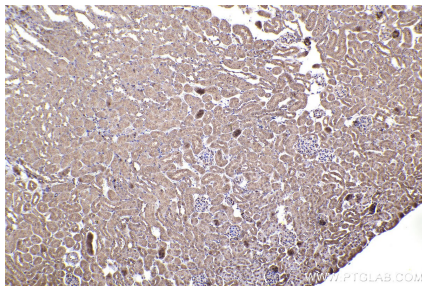
Synonyms

RAB9, Ras-related protein Rab-9A, Ras related protein Rab 9A

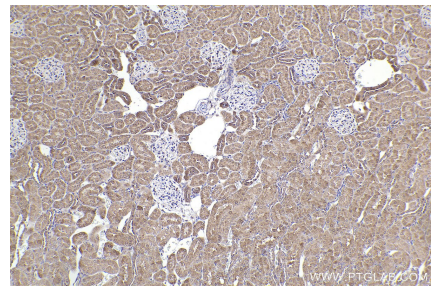
Selected Validation Data



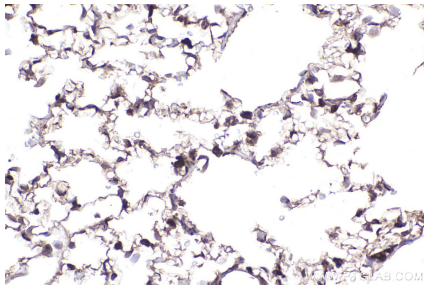
Immunohistochemical analysis of paraffin-embedded human placenta tissue slide using KHC2301 (RAB9A IHC Kit).



Immunohistochemical analysis of paraffin-embedded mouse kidney tissue slide using KHC2301 (RAB9A IHC Kit).



Immunohistochemical analysis of paraffin-embedded rat kidney tissue slide using KHC2301 (RAB9A IHC Kit).



Immunohistochemical analysis of paraffin-embedded rat lung tissue slide using KHC2301 (RAB9A IHC Kit).