

IHC*easy* RAB13 Ready-To-Use IHC Kit

Catalog Number: **KHC2302**

General Information

Sample type:
FFPE tissue
Cited sample type:
Reactivity:
Human, Mouse, Rat
Cited Reactivity:

Assay type:
Immunohistochemistry
Primary antibody type:
Rabbit Polyclonal
Secondary antibody type:
Polymer-HRP-Goat anti-Rabbit

Kit Component

Component	Size	Concentration
Antigen Retrieval Buffer	100 mL	50×
Washing Buffer	100 mL ×2	20×
Blocking Buffer	5 mL	RTU
Primary Antibody	5 mL	RTU
Secondary Antibody	5 mL	RTU
Chromogen Component A	0.2 mL	RTU
Chromogen Component B	4 mL	RTU
Signal Enhancer	5 mL	RTU
Counter Staining Reagent	5 mL	RTU
Mounting Media	5 mL	RTU
Control Slide	1 slide (Optional)	FFPE
Datasheet	1 Copy	
Manual	1 Copy	

Storage Instructions

All the reagents are stored at 2-8°C. The kit is stable for 6 months from the date of receipt.

Background

RAB13 (Ras-related protein Rab-13) is also named as GIG4. Rab13 is a member of the Rab GTPase family. RAB13 is highly expressed in malignant cells. Rab13 was highly expressed in BCSC of triple-negative breast cancer (TNBC). RAB13 is involved in a number of processes in LIHC, including MTORC1 signaling, MYC targets v1, G2M checkpoint, MITOTIC spindle, DNA repair, P53 pathway, glycolysis, PI3K-AKT-MTOR signaling, etc. RAB13 enhances its circulation to the plasma membrane to promote breast cancer invasion. By influencing the tumor microenvironment, RAB13 maintains breast cancer stem cells.

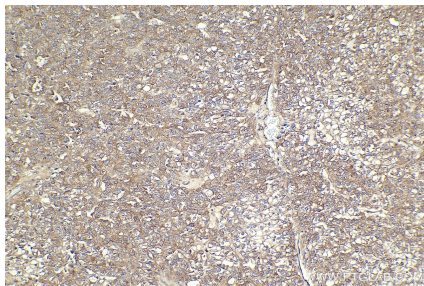
Synonyms

GIG4, Ras-related protein Rab-13, Ras related protein Rab 13, Cell growth-inhibiting gene 4 protein, Cell growth inhibiting gene 4 protein

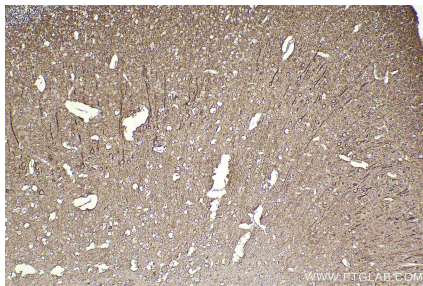
For technical support and original validation data for this product please contact:
T: 1 (888) 4PTGLAB (1-888-478-4522) (toll free in USA), or 1(312) 455-8498 (outside USA)
E: proteintech@ptglab.com
W: ptglab.com

This product is exclusively available under Proteintech Group brand and is not available to purchase from any other manufacturer.

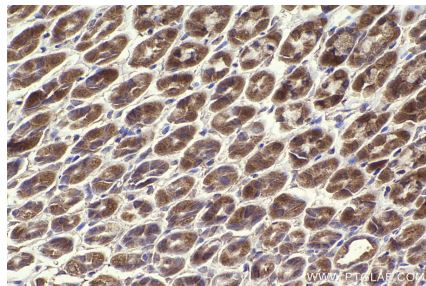
Selected Validation Data



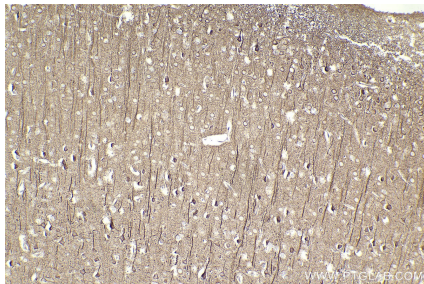
Immunohistochemical analysis of paraffin-embedded human endometrial cancer tissue slide using KHC2302 (RAB13 IHC Kit).



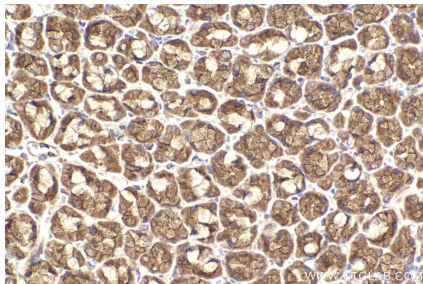
Immunohistochemical analysis of paraffin-embedded mouse brain tissue slide using KHC2302 (RAB13 IHC Kit).



Immunohistochemical analysis of paraffin-embedded mouse stomach tissue slide using KHC2302 (RAB13 IHC Kit).



Immunohistochemical analysis of paraffin-embedded rat brain tissue slide using KHC2302 (RAB13 IHC Kit).



Immunohistochemical analysis of paraffin-embedded rat stomach tissue slide using KHC2302 (RAB13 IHC Kit).