

# IHC*easy* NEK4 Ready-To-Use IHC Kit

Catalog Number: **KHC2308**

## General Information

Sample type:  
FFPE tissue  
Cited sample type:  
Reactivity:  
Human, Mouse, Rat  
Cited Reactivity:

Assay type:  
Immunohistochemistry  
Primary antibody type:  
Rabbit Polyclonal  
Secondary antibody type:  
Polymer-HRP-Goat anti-Rabbit

## Kit Component

Component	Size	Concentration
Antigen Retrieval Buffer	100 mL	50×
Washing Buffer	100 mL ×2	20×
Blocking Buffer	5 mL	RTU
Primary Antibody	5 mL	RTU
Secondary Antibody	5 mL	RTU
Chromogen Component A	0.2 mL	RTU
Chromogen Component B	4 mL	RTU
Signal Enhancer	5 mL	RTU
Counter Staining Reagent	5 mL	RTU
Mounting Media	5 mL	RTU
Control Slide	1 slide (Optional)	FFPE
Datasheet	1 Copy	
Manual	1 Copy	

## Storage Instructions

All the reagents are stored at 2-8°C. The kit is stable for 6 months from the date of receipt.

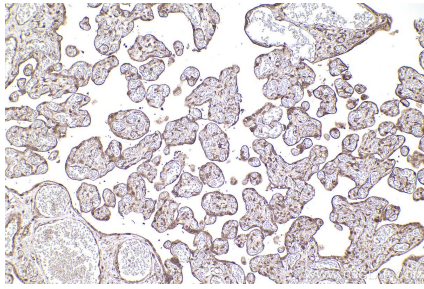
## Background

Neks (NIMA-related kinases) are a group of serine-threonine kinases that are related to NIMA, their ortholog from *Aspergillus nidulans*, which is essential for cells to enter in mitosis. NEK4 was initially identified as STK2, from serine/threonine kinase 2, in a study using a kinase specific cDNA library from human breast cancer tumors or breast cancer cells.

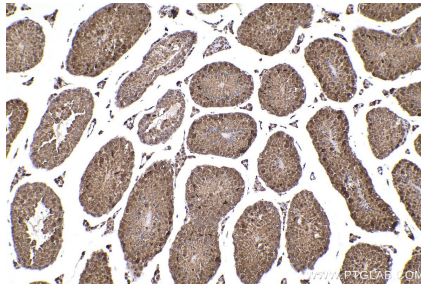
## Synonyms

STK2, pp12301, NRK2, NimA related protein kinase 4

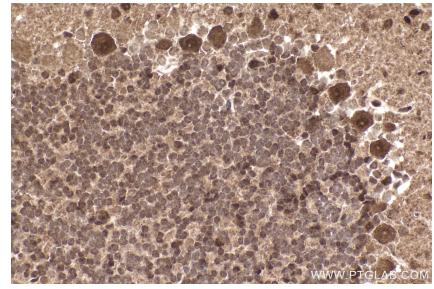
## Selected Validation Data



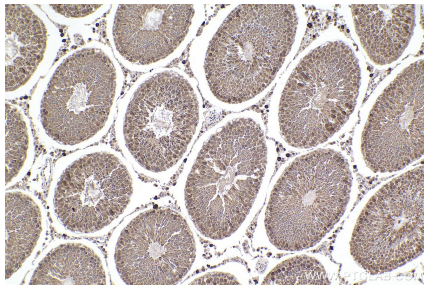
Immunohistochemical analysis of paraffin-embedded human placenta tissue slide using KHC2308 (NEK4 IHC Kit).



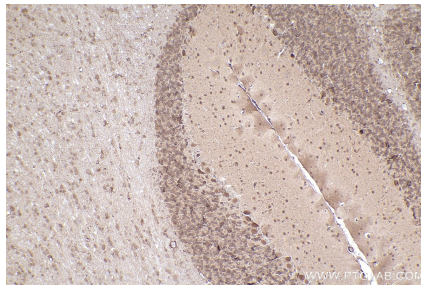
Immunohistochemical analysis of paraffin-embedded mouse testis tissue slide using KHC2308 (NEK4 IHC Kit).



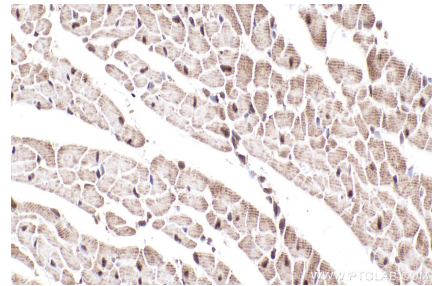
Immunohistochemical analysis of paraffin-embedded mouse cerebellum tissue slide using KHC2308 (NEK4 IHC Kit).



Immunohistochemical analysis of paraffin-embedded rat testis tissue slide using KHC2308 (NEK4 IHC Kit).



Immunohistochemical analysis of paraffin-embedded rat cerebellum tissue slide using KHC2308 (NEK4 IHC Kit).



Immunohistochemical analysis of paraffin-embedded rat heart tissue slide using KHC2308 (NEK4 IHC Kit).