

IHC*easy* ARHGDI^A Ready-To-Use IHC Kit

Catalog Number: **KHC2311**

General Information

Sample type:
FFPE tissue
Cited sample type:
Reactivity:
Human
Cited Reactivity:

Assay type:
Immunohistochemistry
Primary antibody type:
Rabbit Polyclonal
Secondary antibody type:
Polymer-HRP-Goat anti-Rabbit

Kit Component

Component	Size	Concentration
Antigen Retrieval Buffer	100 mL	50×
Washing Buffer	100 mL ×2	20×
Blocking Buffer	5 mL	RTU
Primary Antibody	5 mL	RTU
Secondary Antibody	5 mL	RTU
Chromogen Component A	0.2 mL	RTU
Chromogen Component B	4 mL	RTU
Signal Enhancer	5 mL	RTU
Counter Staining Reagent	5 mL	RTU
Mounting Media	5 mL	RTU
Control Slide	1 slide (Optional)	FFPE
Datasheet	1 Copy	
Manual	1 Copy	

Storage Instructions

All the reagents are stored at 2-8°C. The kit is stable for 6 months from the date of receipt.

Background

Rho GDP-dissociation inhibitor (RhoGDI), also called ARHGDI^A, is one member of ARHGDI^s, which is ubiquitously expressed and interacts with several Rho GTPases, mainly including RhoA, Rac1, and Cdc42. RhoGDI can inhibit nucleotide exchange and membrane association to downregulate the activities of Rho family GTPase. It is overexpressed in various human cancers. Activity of this protein is important in a variety of cellular processes, and it is overexpressed in various human cancers. Mutations in RhoGDI have been found in individuals with nephrotic syndrome, type 8.

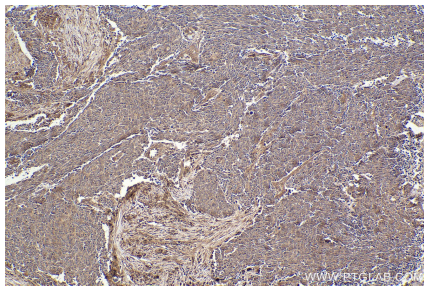
Synonyms

Rho GDP-dissociation inhibitor 1, Rho GDI alpha, Rho GDI 1, Rho GDI, GDIA1

For technical support and original validation data for this product please contact:
T: 1 (888) 4PTGLAB (1-888-478-4522) (toll free in USA), or 1(312) 455-8498 (outside USA)
E: proteintech@ptglab.com
W: ptglab.com

This product is exclusively available under Proteintech Group brand and is not available to purchase from any other manufacturer.

Selected Validation Data



Immunohistochemical analysis of paraffin-embedded human lung cancer tissue slide using KHC2311 (ARHGDIA IHC Kit).