

# IHC*easy* LIMK2 Ready-To-Use IHC Kit

Catalog Number: **KHC2318**

## General Information

Sample type:  
FFPE tissue  
Cited sample type:  
Reactivity:  
Human, Mouse  
Cited Reactivity:

Assay type:  
Immunohistochemistry  
Primary antibody type:  
Rabbit Polyclonal  
Secondary antibody type:  
Polymer-HRP-Goat anti-Rabbit

## Kit Component

Component	Size	Concentration
Antigen Retrieval Buffer	100 mL	50×
Washing Buffer	100 mL ×2	20×
Blocking Buffer	5 mL	RTU
Primary Antibody	5 mL	RTU
Secondary Antibody	5 mL	RTU
Chromogen Component A	0.2 mL	RTU
Chromogen Component B	4 mL	RTU
Signal Enhancer	5 mL	RTU
Counter Staining Reagent	5 mL	RTU
Mounting Media	5 mL	RTU
Control Slide	1 slide (Optional)	FFPE
Datasheet	1 Copy	
Manual	1 Copy	

## Storage Instructions

All the reagents are stored at 2-8°C. The kit is stable for 6 months from the date of receipt.

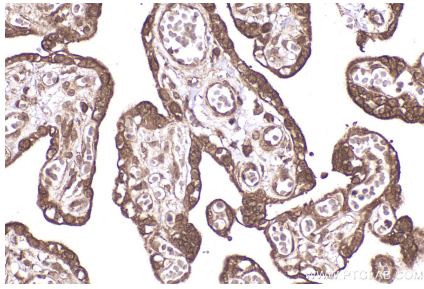
## Background

The family of LIM kinase (LIMK) includes two similar proteins, LIMK1 and LIMK2, that share overall identity of 53% with 75%, 55%, and 42% amino acid identity in the LIM, kinase, and PDZ domains, respectively. LIMK2 regulates actin cytoskeletal reorganization through phosphorylating and inactivating cofilin, an actin-depolymerizing factor of actin filaments. It also may associate with gamma-tubulin and play a role in mitotic spindle assembly.

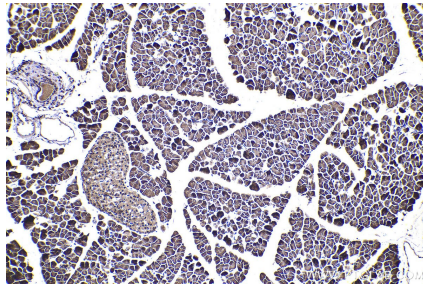
## Synonyms

LIMK-2, LIMK 2, LIM domain kinase 2, EC:2.7.11.1

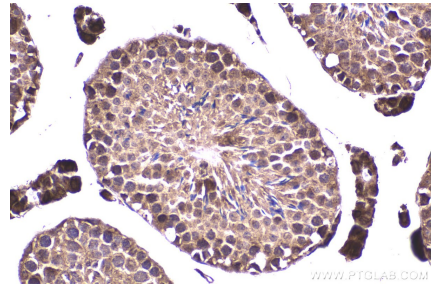
## Selected Validation Data



Immunohistochemical analysis of paraffin-embedded human placenta tissue slide using KHC2318 (LIMK2 IHC Kit).



Immunohistochemical analysis of paraffin-embedded mouse pancreas tissue slide using KHC2318 (LIMK2 IHC Kit).



Immunohistochemical analysis of paraffin-embedded mouse testis tissue slide using KHC2318 (LIMK2 IHC Kit).