

# IHC*easy* GPSM2 Ready-To-Use IHC Kit

Catalog Number: **KHC2370**

## General Information

Sample type:  
FFPE tissue  
Cited sample type:  
Reactivity:  
Human, Mouse, Rat  
Cited Reactivity:

Assay type:  
Immunohistochemistry  
Primary antibody type:  
Rabbit Polyclonal  
Secondary antibody type:  
Polymer-HRP-Goat anti-Rabbit

## Kit Component

Component	Size	Concentration
Antigen Retrieval Buffer	100 mL	50×
Washing Buffer	100 mL ×2	20×
Blocking Buffer	5 mL	RTU
Primary Antibody	5 mL	RTU
Secondary Antibody	5 mL	RTU
Chromogen Component A	0.2 mL	RTU
Chromogen Component B	4 mL	RTU
Signal Enhancer	5 mL	RTU
Counter Staining Reagent	5 mL	RTU
Mounting Media	5 mL	RTU
Control Slide	1 slide (Optional)	FFPE
Datasheet	1 Copy	
Manual	1 Copy	

## Storage Instructions

All the reagents are stored at 2-8°C. The kit is stable for 6 months from the date of receipt.

## Background

GPSM2 belongs to a family of proteins that modulate activation of G proteins. GPSM2 assists in the exchange of guanine nucleotides, and allows extracellular signals to be transmitted to cells via cell surface, and ultimately plays a key role in the activation of G-proteins. Therefore, GPSM2 is a critical factor for the stability of cell division. Some recent studies have shown that GPSM2 messenger RNA (mRNA) is overexpressed and plays a positive role in the development of certain tumors, such as liver cancer, pancreatic cancer, breast cancer. It also plays a role in neuroblast division and in the development of normal hearing. Mutations in GPSM2 are associated with autosomal recessive nonsyndromic deafness (DFNB82), which is a form of non-syndromic deafness characterized by prelingual, bilateral, severe, sensorineural hearing loss.

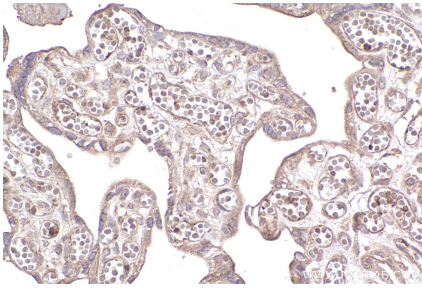
## Synonyms

Pins, LGN, G-protein-signaling modulator 2, G protein signaling modulator 2

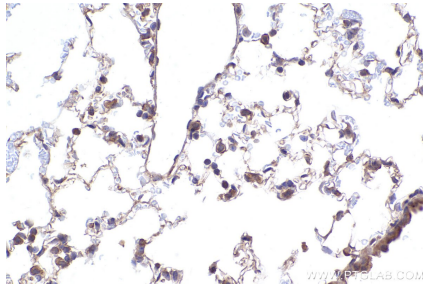
For technical support and original validation data for this product please contact:  
T: 1 (888) 4PTGLAB (1-888-478-4522) (toll free in USA), or 1(312) 455-8498 (outside USA)  
E: [proteintech@ptglab.com](mailto:proteintech@ptglab.com)  
W: [ptglab.com](http://ptglab.com)

This product is exclusively available under Proteintech Group brand and is not available to purchase from any other manufacturer.

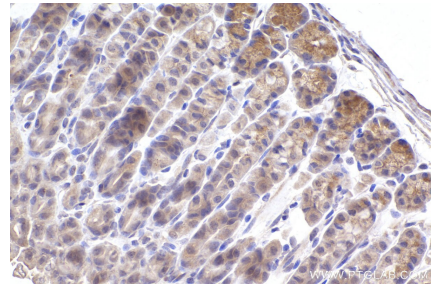
## Selected Validation Data



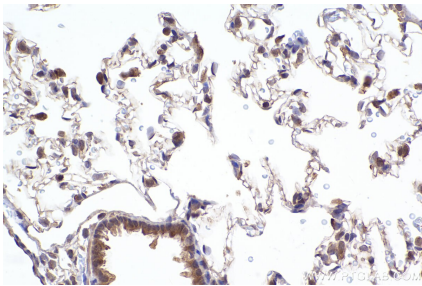
Immunohistochemical analysis of paraffin-embedded human placenta tissue slide using KHC2370 (GPSM2 IHC Kit).



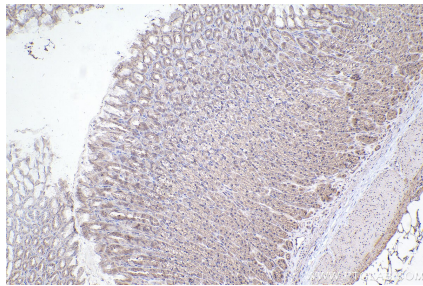
Immunohistochemical analysis of paraffin-embedded mouse lung tissue slide using KHC2370 (GPSM2 IHC Kit).



Immunohistochemical analysis of paraffin-embedded mouse stomach tissue slide using KHC2370 (GPSM2 IHC Kit).



Immunohistochemical analysis of paraffin-embedded rat lung tissue slide using KHC2370 (GPSM2 IHC Kit).



Immunohistochemical analysis of paraffin-embedded rat stomach tissue slide using KHC2370 (GPSM2 IHC Kit).