

IHC*easy* APBA1 Ready-To-Use IHC Kit

Catalog Number: **KHC2387**

General Information

Sample type:
FFPE tissue
Cited sample type:
Reactivity:
Human, Mouse, Rat
Cited Reactivity:

Assay type:
Immunohistochemistry
Primary antibody type:
Rabbit Polyclonal
Secondary antibody type:
Polymer-HRP-Goat anti-Rabbit

Kit Component

Component	Size	Concentration
Antigen Retrieval Buffer	100 mL	50×
Washing Buffer	100 mL ×2	20×
Blocking Buffer	5 mL	RTU
Primary Antibody	5 mL	RTU
Secondary Antibody	5 mL	RTU
Chromogen Component A	0.2 mL	RTU
Chromogen Component B	4 mL	RTU
Signal Enhancer	5 mL	RTU
Counter Staining Reagent	5 mL	RTU
Mounting Media	5 mL	RTU
Control Slide	1 slide (Optional)	FFPE
Datasheet	1 Copy	
Manual	1 Copy	

Storage Instructions

All the reagents are stored at 2-8°C. The kit is stable for 6 months from the date of receipt.

Background

APBA1, also named MINT1 and X11A, is a brain-specific multi-modular protein that interacts with the Alzheimer's disease amyloid precursor protein (APP)(PMID: 22136355). APP functions as a cytosolic anchoring site that can prevent the gene product's nuclear translocation. APBA1 is expressed in the brain and was found to interact with Munc18.

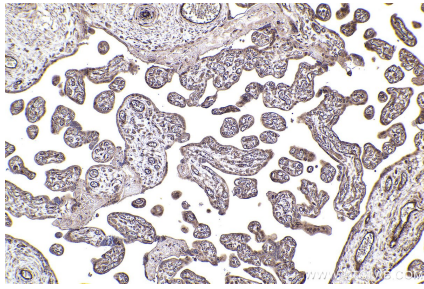
Synonyms

X11, Neuron specific X11 protein, MINT1, Mint 1, D9S411E

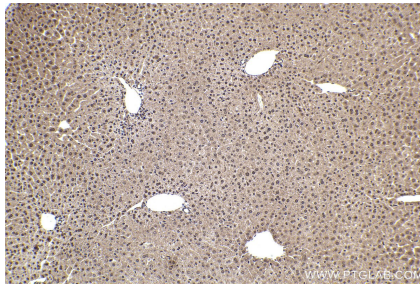
For technical support and original validation data for this product please contact:
T: 1 (888) 4PTGLAB (1-888-478-4522) (toll free in USA), or 1(312) 455-8498 (outside USA)
E: proteintech@ptglab.com
W: ptglab.com

This product is exclusively available under Proteintech Group brand and is not available to purchase from any other manufacturer.

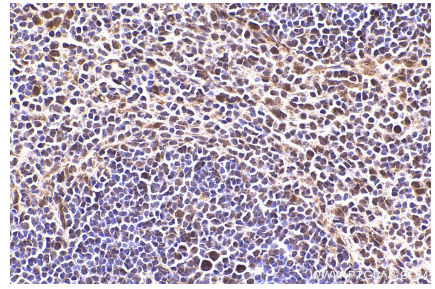
Selected Validation Data



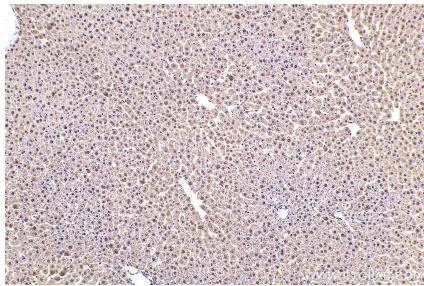
Immunohistochemical analysis of paraffin-embedded human placenta tissue slide using KHC2387 (APBA1 IHC Kit).



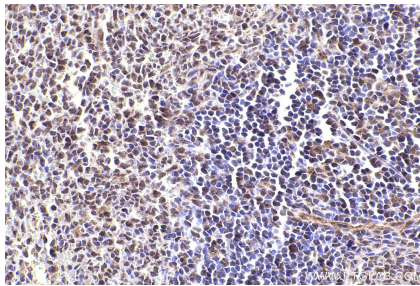
Immunohistochemical analysis of paraffin-embedded mouse liver tissue slide using KHC2387 (APBA1 IHC Kit).



Immunohistochemical analysis of paraffin-embedded mouse spleen tissue slide using KHC2387 (APBA1 IHC Kit).



Immunohistochemical analysis of paraffin-embedded rat liver tissue slide using KHC2387 (APBA1 IHC Kit).



Immunohistochemical analysis of paraffin-embedded rat spleen tissue slide using KHC2387 (APBA1 IHC Kit).