

IHC*easy* AKAP12 Ready-To-Use IHC Kit

Catalog Number: **KHC2388**

General Information

Sample type:
FFPE tissue
Cited sample type:
Reactivity:
Human
Cited Reactivity:

Assay type:
Immunohistochemistry
Primary antibody type:
Rabbit Polyclonal
Secondary antibody type:
Polymer-HRP-Goat anti-Rabbit

Kit Component

Component	Size	Concentration
Antigen Retrieval Buffer	100 mL	50×
Washing Buffer	100 mL ×2	20×
Blocking Buffer	5 mL	RTU
Primary Antibody	5 mL	RTU
Secondary Antibody	5 mL	RTU
Chromogen Component A	0.2 mL	RTU
Chromogen Component B	4 mL	RTU
Signal Enhancer	5 mL	RTU
Counter Staining Reagent	5 mL	RTU
Mounting Media	5 mL	RTU
Control Slide	1 slide (Optional)	FFPE
Datasheet	1 Copy	
Manual	1 Copy	

Storage Instructions

All the reagents are stored at 2-8°C. The kit is stable for 6 months from the date of receipt.

Background

AKAP12, also named as AKAP250, is a 1782 amino acid protein, which contains three AKAP domains. AKAP12 localizes in the cytoplasm and is expressed in endothelial cells, cultured fibroblasts and osteosarcoma, but not in platelets, leukocytes, monocytic cell lines or peripheral blood cells. AKAP12 as an anchoring protein that mediates the subcellular compartmentation of protein kinase A (PKA) and protein kinase C (PKC). AKAP12 expression is known to be suppressed in several human malignancies including breast, prostate, gastric and colon cancers.

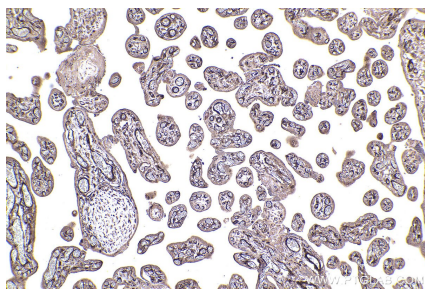
Synonyms

A-kinase anchor protein 12, AKAP250, AKAP-12, AKAP 250, AKAP 12

For technical support and original validation data for this product please contact:
T: 1 (888) 4PTGLAB (1-888-478-4522) (toll free in USA), or 1(312) 455-8498 (outside USA)
E: proteintech@ptglab.com
W: ptglab.com

This product is exclusively available under Proteintech Group brand and is not available to purchase from any other manufacturer.

Selected Validation Data



Immunohistochemical analysis of paraffin-embedded human placenta tissue slide using KHC2388 (AKAP12 IHC Kit).