

IHC*easy* PRKCQ Ready-To-Use IHC Kit

Catalog Number: **KHC2392**

General Information

Sample type:
FFPE tissue
Cited sample type:
Reactivity:
Human, Mouse
Cited Reactivity:

Assay type:
Immunohistochemistry
Primary antibody type:
Rabbit Polyclonal
Secondary antibody type:
Polymer-HRP-Goat anti-Rabbit

Kit Component

| Component | Size | Concentration |
|--------------------------|--------------------|---------------|
| Antigen Retrieval Buffer | 100 mL | 50× |
| Washing Buffer | 100 mL ×2 | 20× |
| Blocking Buffer | 5 mL | RTU |
| Primary Antibody | 5 mL | RTU |
| Secondary Antibody | 5 mL | RTU |
| Chromogen Component A | 0.2 mL | RTU |
| Chromogen Component B | 4 mL | RTU |
| Signal Enhancer | 5 mL | RTU |
| Counter Staining Reagent | 5 mL | RTU |
| Mounting Media | 5 mL | RTU |
| Control Slide | 1 slide (Optional) | FFPE |
| Datasheet | 1 Copy | |
| Manual | 1 Copy | |

Storage Instructions

All the reagents are stored at 2-8°C. The kit is stable for 6 months from the date of receipt.

Background

PRKCQ, also named as PRKCT and nPKC-theta, belongs to the protein kinase superfamily, AGC Ser/Thr protein kinase family and PKC subfamily. PRKCQ catalyzes the reaction: ATP + a protein = ADP + a phosphoprotein. PRKCQ is a calcium-independent, phospholipid-dependent, serine- and threonine-specific enzyme. It is essential for T-cell receptor (TCR)-mediated T-cell activation, but it is dispensable during TCR-dependent thymocyte development. PRKCQ links the TCR signaling complex to the activation of NF-kappa-B in mature T lymphocytes. It is required for interleukin-2 (IL2) production. PKC is activated by diacylglycerol which in turn phosphorylates a range of cellular proteins. PKC also serves as the receptor for phorbol esters, a class of tumor promoters.

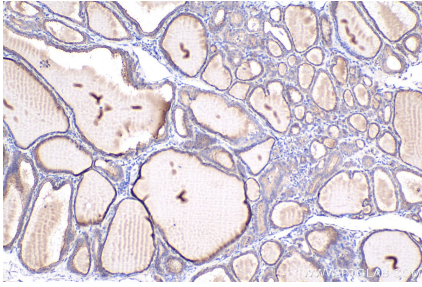
Synonyms

Protein kinase C theta type, protein kinase C, PRKCT, nPKC-theta, EC:2.7.11.13

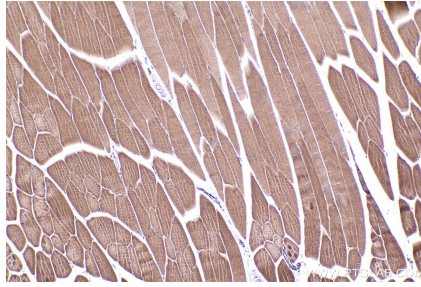
For technical support and original validation data for this product please contact:
T: 1 (888) 4PTGLAB (1-888-478-4522) (toll free in USA), or 1(312) 455-8498 (outside USA)
E: proteintech@ptglab.com
W: ptglab.com

This product is exclusively available under Proteintech Group brand and is not available to purchase from any other manufacturer.

Selected Validation Data



Immunohistochemical analysis of paraffin-embedded human thyroid cancer tissue slide using KHC2392 (PRKCQ IHC Kit).



Immunohistochemical analysis of paraffin-embedded mouse skeletal muscle tissue slide using KHC2392 (PRKCQ IHC Kit).