

IHC*easy* TWF1 Ready-To-Use IHC Kit

Catalog Number: **KHC2407**

General Information

Sample type:
FFPE tissue
Cited sample type:
Reactivity:
Human, Mouse, Rat
Cited Reactivity:

Assay type:
Immunohistochemistry
Primary antibody type:
Rabbit Polyclonal
Secondary antibody type:
Polymer-HRP-Goat anti-Rabbit

Kit Component

Component	Size	Concentration
Antigen Retrieval Buffer	100 mL	50×
Washing Buffer	100 mL ×2	20×
Blocking Buffer	5 mL	RTU
Primary Antibody	5 mL	RTU
Secondary Antibody	5 mL	RTU
Chromogen Component A	0.2 mL	RTU
Chromogen Component B	4 mL	RTU
Signal Enhancer	5 mL	RTU
Counter Staining Reagent	5 mL	RTU
Mounting Media	5 mL	RTU
Control Slide	1 slide (Optional)	FFPE
Datasheet	1 Copy	
Manual	1 Copy	

Storage Instructions

All the reagents are stored at 2-8°C. The kit is stable for 6 months from the date of receipt.

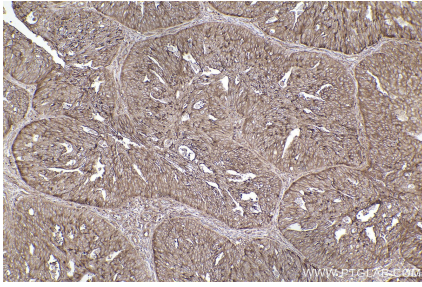
Background

Twinfilin-1 (TWF1) is an actin-binding protein implicated in cell motility, invasion and migration. Its expression is linked to sensitivity to drugs and cancer progression. Overexpression of TWF1 has been reported in various cancers, including breast cancer and lung cancer.

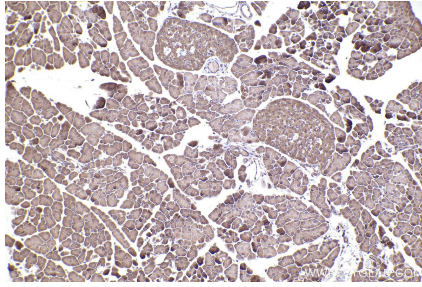
Synonyms

TWF1, Twinfilin 1, Twinfilin-1

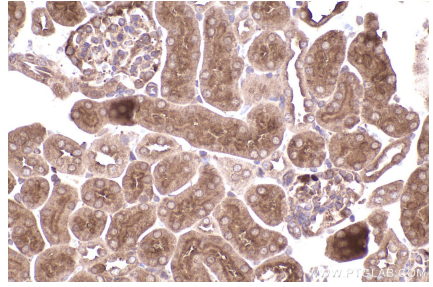
Selected Validation Data



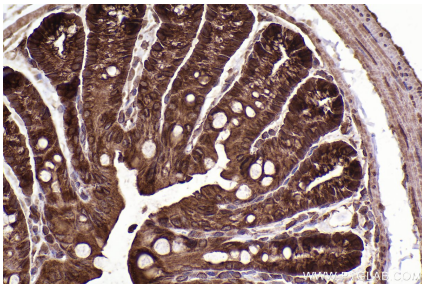
Immunohistochemical analysis of paraffin-embedded human ovary cancer tissue slide using KHC2407 (TWF1 IHC Kit).



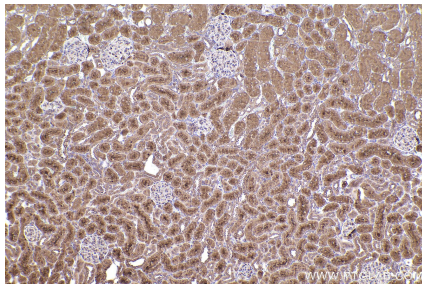
Immunohistochemical analysis of paraffin-embedded mouse pancreas tissue slide using KHC2407 (TWF1 IHC Kit).



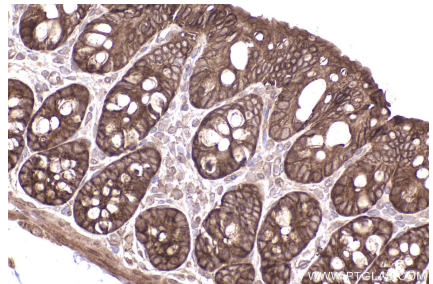
Immunohistochemical analysis of paraffin-embedded mouse kidney tissue slide using KHC2407 (TWF1 IHC Kit).



Immunohistochemical analysis of paraffin-embedded mouse colon tissue slide using KHC2407 (TWF1 IHC Kit).



Immunohistochemical analysis of paraffin-embedded rat kidney tissue slide using KHC2407 (TWF1 IHC Kit).



Immunohistochemical analysis of paraffin-embedded rat colon tissue slide using KHC2407 (TWF1 IHC Kit).