

# IHC*easy* TROAP Ready-To-Use IHC Kit

Catalog Number: **KHC2408**

## General Information

Sample type:  
FFPE tissue  
Cited sample type:  
Reactivity:  
Human  
Cited Reactivity:

Assay type:  
Immunohistochemistry  
Primary antibody type:  
Rabbit Polyclonal  
Secondary antibody type:  
Polymer-HRP-Goat anti-Rabbit

## Kit Component

Component	Size	Concentration
Antigen Retrieval Buffer	100 mL	50×
Washing Buffer	100 mL ×2	20×
Blocking Buffer	5 mL	RTU
Primary Antibody	5 mL	RTU
Secondary Antibody	5 mL	RTU
Chromogen Component A	0.2 mL	RTU
Chromogen Component B	4 mL	RTU
Signal Enhancer	5 mL	RTU
Counter Staining Reagent	5 mL	RTU
Mounting Media	5 mL	RTU
Control Slide	1 slide (Optional)	FFPE
Datasheet	1 Copy	
Manual	1 Copy	

## Storage Instructions

All the reagents are stored at 2-8°C. The kit is stable for 6 months from the date of receipt.

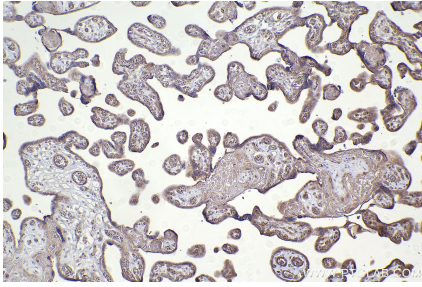
## Background

TROAP, also known as tastin, was first cloned from human epithelial cells in 1995. It is a cytoplasmic protein composed of 778 amino acid residues and contains potential phosphorylation sites for protein kinases. TROAP highly expresses in bone marrow, testis and thymus, and is involved in centrosome integrity and spindle assembly during mitosis. TROAP has been shown to promote some tumor progressions, such as those of breast and colorectal cancers.

## Synonyms

TROAP, Tastin, Trophinin assisting protein, Trophinin

## Selected Validation Data



Immunohistochemical analysis of paraffin-embedded human placenta tissue slide using KHC2408 (TROAP IHC Kit).