

# IHC*easy* Flightless I Ready-To-Use IHC Kit

Catalog Number: **KHC2416**

## General Information

Sample type:  
FFPE tissue  
Cited sample type:  
Reactivity:  
Human, Mouse, Rat  
Cited Reactivity:

Assay type:  
Immunohistochemistry  
Primary antibody type:  
Mouse Monoclonal  
Secondary antibody type:  
Polymer-HRP-Goat anti-Mouse

## Kit Component

Component	Size	Concentration
Antigen Retrieval Buffer	100 mL	50×
Washing Buffer	100 mL ×2	20×
Blocking Buffer	5 mL	RTU
Primary Antibody	5 mL	RTU
Secondary Antibody	5 mL	RTU
Chromogen Component A	0.2 mL	RTU
Chromogen Component B	4 mL	RTU
Signal Enhancer	5 mL	RTU
Counter Staining Reagent	5 mL	RTU
Mounting Media	5 mL	RTU
Control Slide	1 slide (Optional)	FFPE
Datasheet	1 Copy	
Manual	1 Copy	

## Storage Instructions

All the reagents are stored at 2-8°C. The kit is stable for 6 months from the date of receipt.

## Background

Flightless I (Flil) is the most evolutionarily conserved member of the gelsolin superfamily of proteins which are key regulators of actin filament assembly and turnover. Flil comprises an N-terminal leucine-rich repeat (LRR) domain which is not present in other gelsolin family members, and the LRR domain may enable interactions between Flil and other molecules involved in signal transduction, thereby spatially integrating signaling and actin remodeling functions. This protein was originally found in *Drosophila* and participates in the embryonic development, while mammalian Flil protein was involved in the regulation of wound repair, skin barrier development. Studies recently demonstrated that Flil protein associated with colorectal cancer, hepatocellular and prostate cancer.

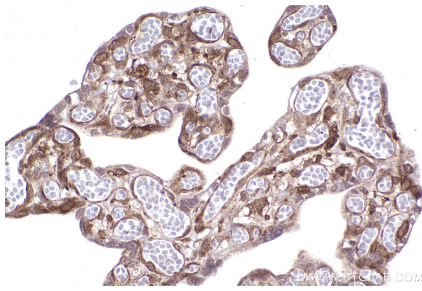
## Synonyms

Flightless I, Flightless-1, FLII, FLIL, Protein flight

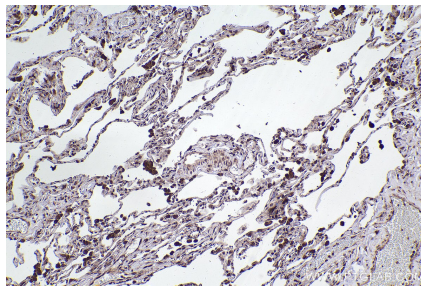
For technical support and original validation data for this product please contact:  
T: 1 (888) 4PTGLAB (1-888-478-4522) (toll free in USA), or 1(312) 455-8498 (outside USA)  
E: [proteintech@ptglab.com](mailto:proteintech@ptglab.com)  
W: [ptglab.com](http://ptglab.com)

This product is exclusively available under Proteintech Group brand and is not available to purchase from any other manufacturer.

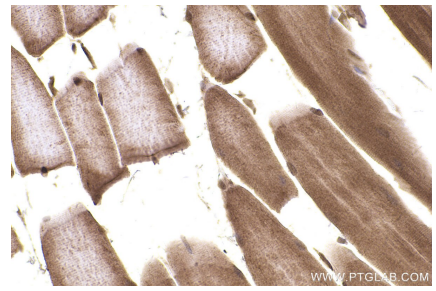
## Selected Validation Data



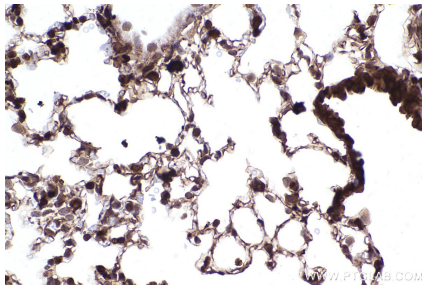
Immunohistochemical analysis of paraffin-embedded human placenta tissue slide using KHC2416 (Flightless I IHC Kit).



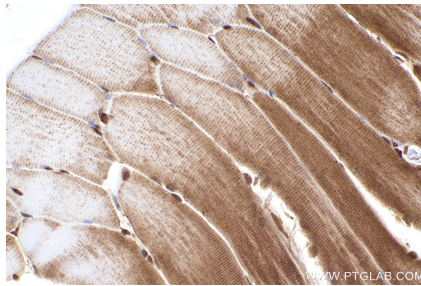
Immunohistochemical analysis of paraffin-embedded human lung tissue slide using KHC2416 (Flightless I IHC Kit).



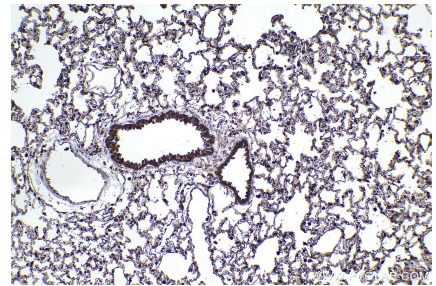
Immunohistochemical analysis of paraffin-embedded mouse skeletal muscle tissue slide using KHC2416 (Flightless I IHC Kit).



Immunohistochemical analysis of paraffin-embedded mouse lung tissue slide using KHC2416 (Flightless I IHC Kit).



Immunohistochemical analysis of paraffin-embedded rat skeletal muscle tissue slide using KHC2416 (Flightless I IHC Kit).



Immunohistochemical analysis of paraffin-embedded rat lung tissue slide using KHC2416 (Flightless I IHC Kit).