

IHC*easy* SF3B2 Ready-To-Use IHC Kit

Catalog Number: **KHC2427**

General Information

Sample type:
FFPE tissue
Cited sample type:
Reactivity:
Human, Mouse, Rat
Cited Reactivity:

Assay type:
Immunohistochemistry
Primary antibody type:
Rabbit Polyclonal
Secondary antibody type:
Polymer-HRP-Goat anti-Rabbit

Kit Component

Component	Size	Concentration
Antigen Retrieval Buffer	100 mL	50×
Washing Buffer	100 mL ×2	20×
Blocking Buffer	5 mL	RTU
Primary Antibody	5 mL	RTU
Secondary Antibody	5 mL	RTU
Chromogen Component A	0.2 mL	RTU
Chromogen Component B	4 mL	RTU
Signal Enhancer	5 mL	RTU
Counter Staining Reagent	5 mL	RTU
Mounting Media	5 mL	RTU
Control Slide	1 slide (Optional)	FFPE
Datasheet	1 Copy	
Manual	1 Copy	

Storage Instructions

All the reagents are stored at 2-8°C. The kit is stable for 6 months from the date of receipt.

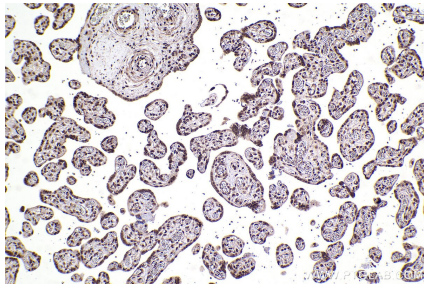
Background

SF3B (splicing factor 3B) is a U2 snRNP-associated protein complex essential for spliceosome assembly. SF3B complex contains the spliceosome-associated protein (SAP) 49, 130, 145, and 155 has been demonstrated. And this complex is essential for U2 snRNP to anchor to the pre-mRNA. Splicing factor 3B subunit 2 (SF3B2), known as SAP145, forms complex with SAP49 which plays a role in cell cycle progression.

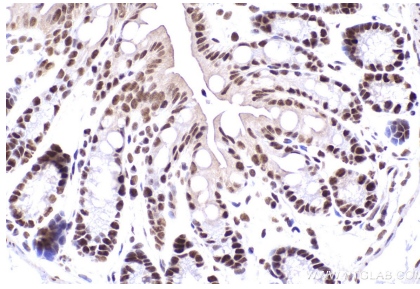
Synonyms

SF3B2,Pre-mRNA-splicing factor SF3b 145 kDa subuni

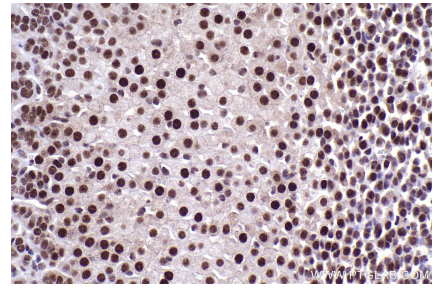
Selected Validation Data



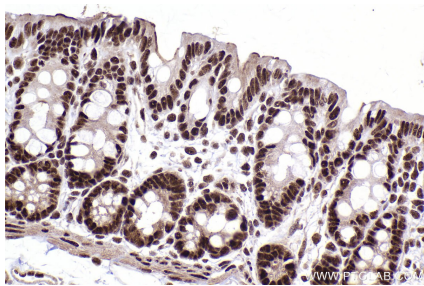
Immunohistochemical analysis of paraffin-embedded human placenta tissue slide using KHC2427 (SF3B2 IHC Kit).



Immunohistochemical analysis of paraffin-embedded mouse colon tissue slide using KHC2427 (SF3B2 IHC Kit).



Immunohistochemical analysis of paraffin-embedded mouse adrenal gland tissue slide using KHC2427 (SF3B2 IHC Kit).



Immunohistochemical analysis of paraffin-embedded rat colon tissue slide using KHC2427 (SF3B2 IHC Kit).