

# IHC*easy* CKAP5/Ch-TOG Ready-To-Use IHC Kit

Catalog Number: **KHC2444**

## General Information

Sample type:  
FFPE tissue  
Cited sample type:  
Reactivity:  
Human, Mouse, Rat  
Cited Reactivity:

Assay type:  
Immunohistochemistry  
Primary antibody type:  
Rabbit Recombinant  
Secondary antibody type:  
Polymer-HRP-Goat anti-Rabbit

## Kit Component

Component	Size	Concentration
Antigen Retrieval Buffer	100 mL	50×
Washing Buffer	100 mL ×2	20×
Blocking Buffer	5 mL	RTU
Primary Antibody	5 mL	RTU
Secondary Antibody	5 mL	RTU
Chromogen Component A	0.2 mL	RTU
Chromogen Component B	4 mL	RTU
Signal Enhancer	5 mL	RTU
Counter Staining Reagent	5 mL	RTU
Mounting Media	5 mL	RTU
Control Slide	1 slide (Optional)	FFPE
Datasheet	1 Copy	
Manual	1 Copy	

## Storage Instructions

All the reagents are stored at 2-8°C. The kit is stable for 6 months from the date of receipt.

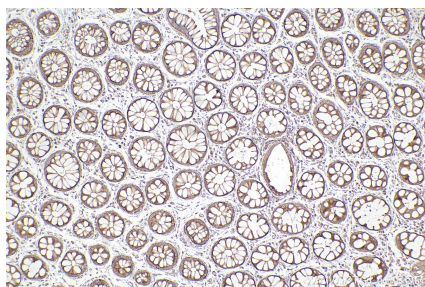
## Background

Ch-TOG (colonic hepatic tumor-overexpressed gene), also known as XMAP215 or CKAP5, is a microtubule polymerase which can promotes cytoplasmic microtubule nucleation and elongation. Through interacting with Aurora-A and TACC3, it plays a major role in organizing spindle poles.

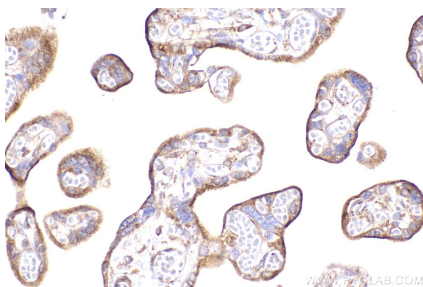
## Synonyms

Ch-TOG,CKAP5,ch TOG,Colonic and hepatic tumor over

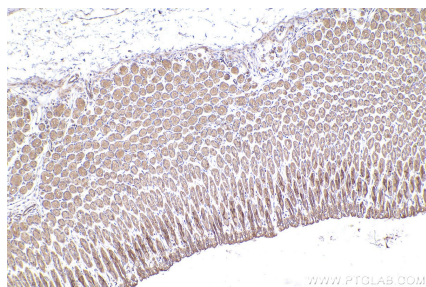
## Selected Validation Data



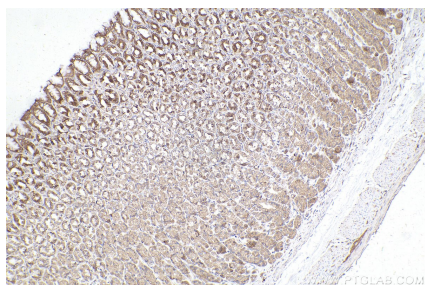
Immunohistochemical analysis of paraffin-embedded human rectal cancer tissue slide using KHC2444 (CKAP5/Ch-TOG IHC Kit).



Immunohistochemical analysis of paraffin-embedded human placenta tissue slide using KHC2444 (CKAP5/Ch-TOG IHC Kit).



Immunohistochemical analysis of paraffin-embedded mouse stomach tissue slide using KHC2444 (CKAP5/Ch-TOG IHC Kit).



Immunohistochemical analysis of paraffin-embedded rat stomach tissue slide using KHC2444 (CKAP5/Ch-TOG IHC Kit).