

IHC*easy* DYNC1H1 Ready-To-Use IHC Kit

Catalog Number: **KHC2455**

General Information

Sample type:
FFPE tissue
Cited sample type:
Reactivity:
Human, Mouse, Rat
Cited Reactivity:

Assay type:
Immunohistochemistry
Primary antibody type:
Rabbit Polyclonal
Secondary antibody type:
Polymer-HRP-Goat anti-Rabbit

Kit Component

Component	Size	Concentration
Antigen Retrieval Buffer	100 mL	50×
Washing Buffer	100 mL ×2	20×
Blocking Buffer	5 mL	RTU
Primary Antibody	5 mL	RTU
Secondary Antibody	5 mL	RTU
Chromogen Component A	0.2 mL	RTU
Chromogen Component B	4 mL	RTU
Signal Enhancer	5 mL	RTU
Counter Staining Reagent	5 mL	RTU
Mounting Media	5 mL	RTU
Control Slide	1 slide (Optional)	FFPE
Datasheet	1 Copy	
Manual	1 Copy	

Storage Instructions

All the reagents are stored at 2-8°C. The kit is stable for 6 months from the date of receipt.

Background

Dyneins are a group of microtubule-activated ATPases that serve to convert chemical energy into mechanical energy. It can be divided into 2 large subgroups, namely, the axonemal and cytoplasmic dyneins. The conventional cytoplasmic dynein are comprised of 2 heavy chain polypeptides and a number of intermediate and light chains. DYNC1H1 is a cytoplasmic dynein and belongs to the dynein heavy chain family. It acts as a motor for the intracellular retrograde motility of vesicles and organelles along microtubules. DYNC1H1 has been implicated in the degeneration of dopaminergic neuron axons and motor neurons in PD patients.

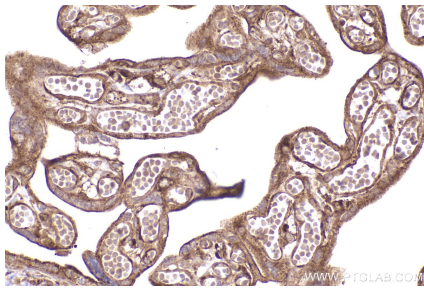
Synonyms

DYNC1H1, DYNC1H 1

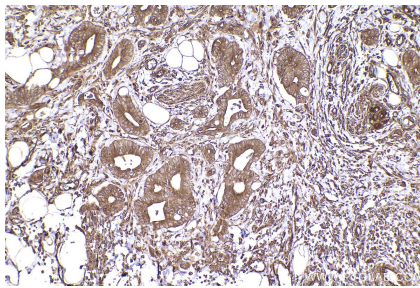
For technical support and original validation data for this product please contact:
T: 1 (888) 4PTGLAB (1-888-478-4522) (toll free in USA), or 1(312) 455-8498 (outside USA)
E: proteintech@ptglab.com
W: ptglab.com

This product is exclusively available under Proteintech Group brand and is not available to purchase from any other manufacturer.

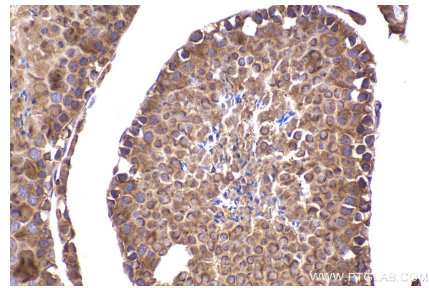
Selected Validation Data



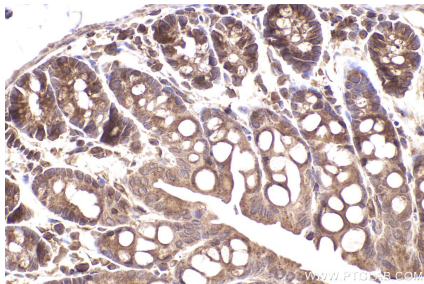
Immunohistochemical analysis of paraffin-embedded human placenta tissue slide using KHC2455 (DYNC1H1 IHC Kit).



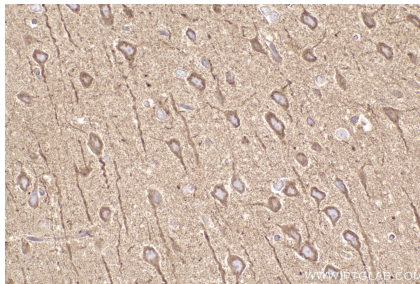
Immunohistochemical analysis of paraffin-embedded human rectal cancer tissue slide using KHC2455 (DYNC1H1 IHC Kit).



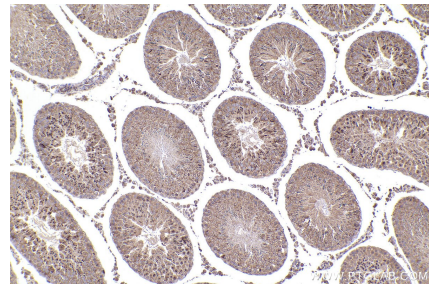
Immunohistochemical analysis of paraffin-embedded mouse testis tissue slide using KHC2455 (DYNC1H1 IHC Kit).



Immunohistochemical analysis of paraffin-embedded mouse colon tissue slide using KHC2455 (DYNC1H1 IHC Kit).



Immunohistochemical analysis of paraffin-embedded rat brain tissue slide using KHC2455 (DYNC1H1 IHC Kit).



Immunohistochemical analysis of paraffin-embedded rat testis tissue slide using KHC2455 (DYNC1H1 IHC Kit).