

IHC*easy* NuMA Ready-To-Use IHC Kit

Catalog Number: **KHC2471**

General Information

Sample type:
FFPE tissue
Cited sample type:
Reactivity:
Human, Mouse, Rat
Cited Reactivity:

Assay type:
Immunohistochemistry
Primary antibody type:
Rabbit Polyclonal
Secondary antibody type:
Polymer-HRP-Goat anti-Rabbit

Kit Component

Component	Size	Concentration
Antigen Retrieval Buffer	100 mL	50×
Washing Buffer	100 mL ×2	20×
Blocking Buffer	5 mL	RTU
Primary Antibody	5 mL	RTU
Secondary Antibody	5 mL	RTU
Chromogen Component A	0.2 mL	RTU
Chromogen Component B	4 mL	RTU
Signal Enhancer	5 mL	RTU
Counter Staining Reagent	5 mL	RTU
Mounting Media	5 mL	RTU
Control Slide	1 slide (Optional)	FFPE
Datasheet	1 Copy	
Manual	1 Copy	

Storage Instructions

All the reagents are stored at 2-8°C. The kit is stable for 6 months from the date of receipt.

Background

NUMA1, also named as Nuclear matrix protein-22, is a 2115 amino acid protein, which forms multiarm oligomers by association of C-terminal tail domains. NUMA1 resides in the nuclear matrix during interphase. NUMA1 is a highly abundant component of the nuclear matrix where it may serve a non-mitotic structural role and occupies the majority of the nuclear volume. NUMA1 is required for maintenance and establishment of the mitotic spindle poles during symmetric cell divisions, functioning as a tether linking bulk microtubules of the spindle to centrosomes.

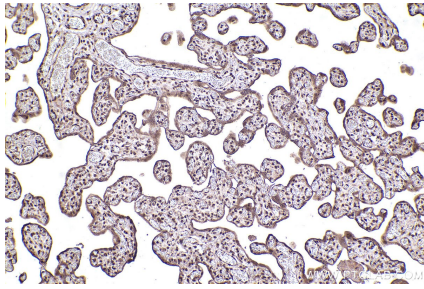
Synonyms

NUMA, NUMA1, NMP22, NMP-22, Nuclear matrix protein-22

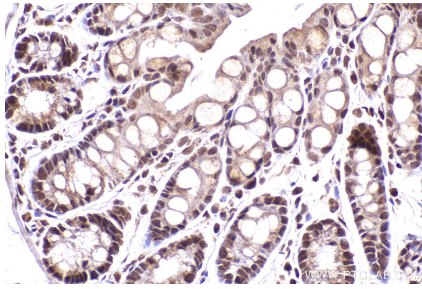
For technical support and original validation data for this product please contact:
T: 1 (888) 4PTGLAB (1-888-478-4522) (toll free in USA), or 1(312) 455-8498 (outside USA)
E: proteintech@ptglab.com
W: ptglab.com

This product is exclusively available under Proteintech Group brand and is not available to purchase from any other manufacturer.

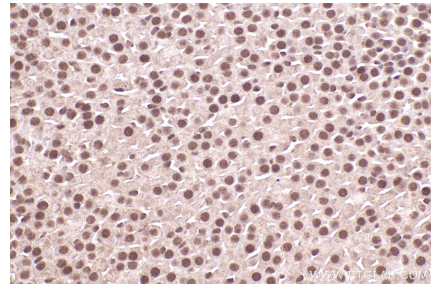
Selected Validation Data



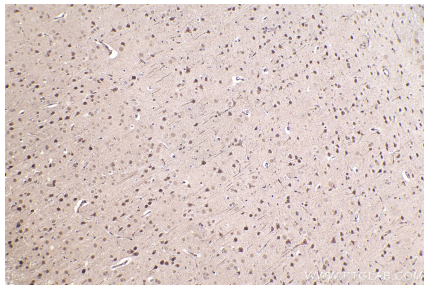
Immunohistochemical analysis of paraffin-embedded human placenta tissue slide using KHC2471 (NuMA IHC Kit).



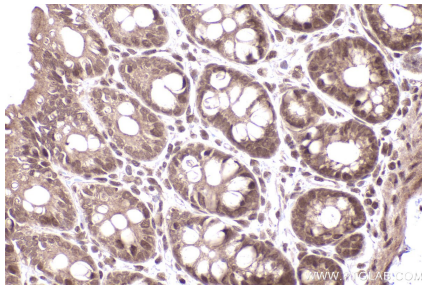
Immunohistochemical analysis of paraffin-embedded mouse colon tissue slide using KHC2471 (NuMA IHC Kit).



Immunohistochemical analysis of paraffin-embedded mouse adrenal gland tissue slide using KHC2471 (NuMA IHC Kit).



Immunohistochemical analysis of paraffin-embedded rat brain tissue slide using KHC2471 (NuMA IHC Kit).



Immunohistochemical analysis of paraffin-embedded rat colon tissue slide using KHC2471 (NuMA IHC Kit).