

# IHC*easy* GAPVD1 Ready-To-Use IHC Kit

Catalog Number: **KHC2472**

## General Information

Sample type:  
FFPE tissue  
Cited sample type:  
Reactivity:  
Human, Mouse  
Cited Reactivity:

Assay type:  
Immunohistochemistry  
Primary antibody type:  
Rabbit Polyclonal  
Secondary antibody type:  
Polymer-HRP-Goat anti-Rabbit

## Kit Component

Component	Size	Concentration
Antigen Retrieval Buffer	100 mL	50×
Washing Buffer	100 mL ×2	20×
Blocking Buffer	5 mL	RTU
Primary Antibody	5 mL	RTU
Secondary Antibody	5 mL	RTU
Chromogen Component A	0.2 mL	RTU
Chromogen Component B	4 mL	RTU
Signal Enhancer	5 mL	RTU
Counter Staining Reagent	5 mL	RTU
Mounting Media	5 mL	RTU
Control Slide	1 slide (Optional)	FFPE
Datasheet	1 Copy	
Manual	1 Copy	

## Storage Instructions

All the reagents are stored at 2-8°C. The kit is stable for 6 months from the date of receipt.

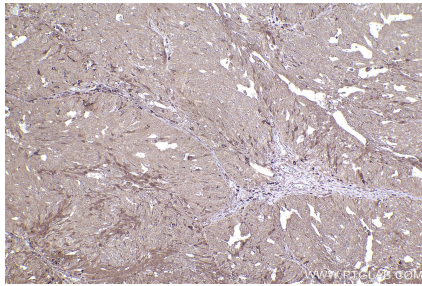
## Background

GTPase activating protein and VPS9 domains 1(GAPVD1) is a multifunctional protein involved in cellular processes such as endocytosis, insulin receptor internalization, and GLUT4 trafficking. Its function is critical in maintaining cellular homeostasis and it interacts with various proteins, including those involved in endocytosis and circadian rhythm regulation.

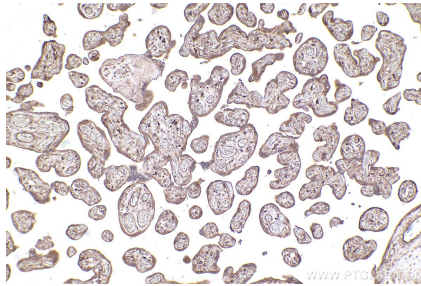
## Synonyms

GAPEX5, GAPex-5, GAPVD1, GTPase-activating protein an

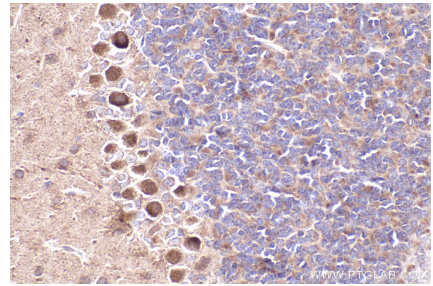
## Selected Validation Data



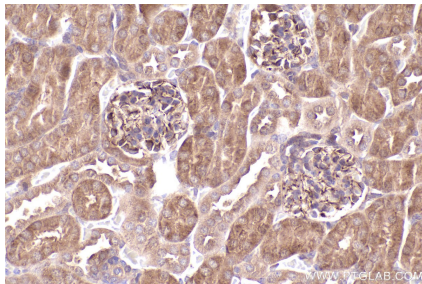
Immunohistochemical analysis of paraffin-embedded human ovary cancer tissue slide using KHC2472 (GAPVD1 IHC Kit).



Immunohistochemical analysis of paraffin-embedded human placenta tissue slide using KHC2472 (GAPVD1 IHC Kit).



Immunohistochemical analysis of paraffin-embedded mouse cerebellum tissue slide using KHC2472 (GAPVD1 IHC Kit).



Immunohistochemical analysis of paraffin-embedded mouse kidney tissue slide using KHC2472 (GAPVD1 IHC Kit).