

# IHC*easy* MAD2L1BP Ready-To-Use IHC Kit

Catalog Number: **KHC2476**

## General Information

Sample type:  
FFPE tissue  
Cited sample type:  
Reactivity:  
Human, Mouse, Rat  
Cited Reactivity:

Assay type:  
Immunohistochemistry  
Primary antibody type:  
Rabbit Polyclonal  
Secondary antibody type:  
Polymer-HRP-Goat anti-Rabbit

## Kit Component

Component	Size	Concentration
Antigen Retrieval Buffer	100 mL	50×
Washing Buffer	100 mL ×2	20×
Blocking Buffer	5 mL	RTU
Primary Antibody	5 mL	RTU
Secondary Antibody	5 mL	RTU
Chromogen Component A	0.2 mL	RTU
Chromogen Component B	4 mL	RTU
Signal Enhancer	5 mL	RTU
Counter Staining Reagent	5 mL	RTU
Mounting Media	5 mL	RTU
Control Slide	1 slide (Optional)	FFPE
Datasheet	1 Copy	
Manual	1 Copy	

## Storage Instructions

All the reagents are stored at 2-8°C. The kit is stable for 6 months from the date of receipt.

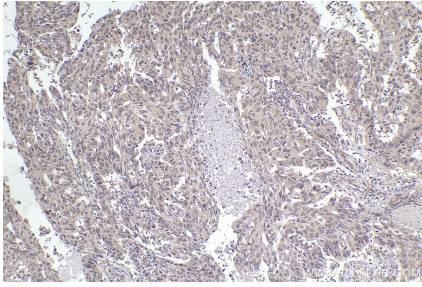
## Background

MAD2L1BP, also named as CMT2 and KIAA0110, belongs to the MAD2L1BP family. It may function to silence the spindle checkpoint and allow mitosis to proceed through anaphase by binding MAD2L1 after it has become dissociated from the MAD2L1-CDC20 complex. MAD2L1BP interacts with the spindle checkpoint and coordinates cell cycle events in late mitosis. MAD2L1BP may play an active role to remove MAD2 from p53CDC and tether MAD2 for silencing the checkpoint.

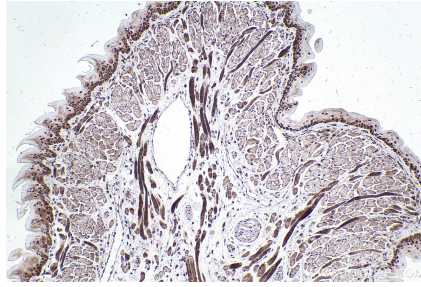
## Synonyms

MAD2L1BP,CMT2,KIAA0110,MAD2L1-binding protein,p31(

## Selected Validation Data



Immunohistochemical analysis of paraffin-embedded human lung cancer tissue slide using KHC2476 (MAD2L1BP IHC Kit).



Immunohistochemical analysis of paraffin-embedded mouse tongue tissue slide using KHC2476 (MAD2L1BP IHC Kit).