

IHC*easy* DOCK11 Ready-To-Use IHC Kit

Catalog Number: **KHC2544**

General Information

Sample type:
FFPE tissue
Cited sample type:
Reactivity:
Human, Mouse, Rat
Cited Reactivity:

Assay type:
Immunohistochemistry
Primary antibody type:
Rabbit Polyclonal
Secondary antibody type:
Polymer-HRP-Goat anti-Rabbit

Kit Component

Component	Size	Concentration
Antigen Retrieval Buffer	100 mL	50×
Washing Buffer	100 mL ×2	20×
Blocking Buffer	5 mL	RTU
Primary Antibody	5 mL	RTU
Secondary Antibody	5 mL	RTU
Chromogen Component A	0.2 mL	RTU
Chromogen Component B	4 mL	RTU
Signal Enhancer	5 mL	RTU
Counter Staining Reagent	5 mL	RTU
Mounting Media	5 mL	RTU
Control Slide	1 slide (Optional)	FFPE
Datasheet	1 Copy	
Manual	1 Copy	

Storage Instructions

All the reagents are stored at 2-8°C. The kit is stable for 6 months from the date of receipt.

Background

DOCK11(also known as Zizimin2) is a member of CDM (Ced-5, DOCK180, and Myoblast City) family guanine nucleotide exchange factor mainly expressed in immune cells. As a guanine nucleotide exchange factor, DOCK11 activated the rho family GTPase cell division cycle 42 (CDC42), resulting in cytoskeletal reorganization.

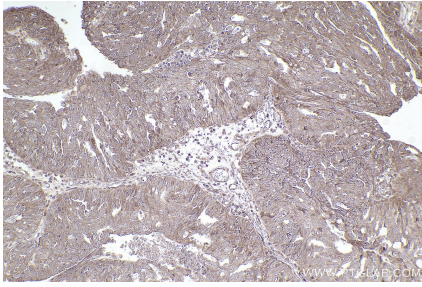
Synonyms

DOCK11,ACG,bB128O4.1,dedicator of cytokinesis 11,Z

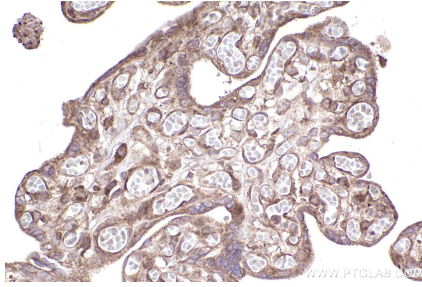
For technical support and original validation data for this product please contact:
T: 1 (888) 4PTGLAB (1-888-478-4522) (toll free in USA), or 1(312) 455-8498 (outside USA)
E: proteintech@ptglab.com
W: ptglab.com

This product is exclusively available under Proteintech Group brand and is not available to purchase from any other manufacturer.

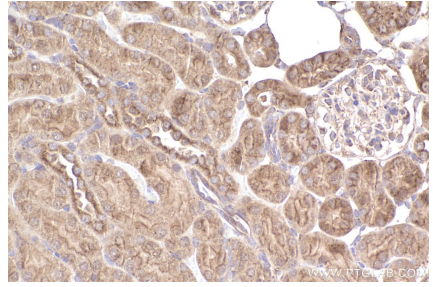
Selected Validation Data



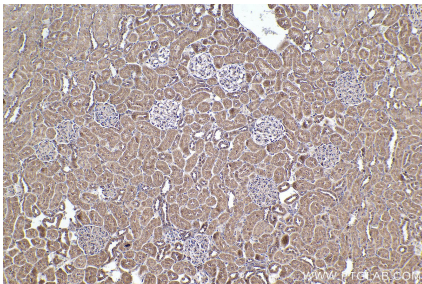
Immunohistochemical analysis of paraffin-embedded human ovary cancer tissue slide using KHC2544 (DOCK11 IHC Kit).



Immunohistochemical analysis of paraffin-embedded human placenta tissue slide using KHC2544 (DOCK11 IHC Kit).



Immunohistochemical analysis of paraffin-embedded mouse kidney tissue slide using KHC2544 (DOCK11 IHC Kit).



Immunohistochemical analysis of paraffin-embedded rat kidney tissue slide using KHC2544 (DOCK11 IHC Kit).