

IHC*easy* HECTD3 Ready-To-Use IHC Kit

Catalog Number: **KHC2553**

General Information

Sample type:
FFPE tissue
Cited sample type:
Reactivity:
Human, Mouse, Rat
Cited Reactivity:

Assay type:
Immunohistochemistry
Primary antibody type:
Rabbit Polyclonal
Secondary antibody type:
Polymer-HRP-Goat anti-Rabbit

Kit Component

Component	Size	Concentration
Antigen Retrieval Buffer	100 mL	50×
Washing Buffer	100 mL ×2	20×
Blocking Buffer	5 mL	RTU
Primary Antibody	5 mL	RTU
Secondary Antibody	5 mL	RTU
Chromogen Component A	0.2 mL	RTU
Chromogen Component B	4 mL	RTU
Signal Enhancer	5 mL	RTU
Counter Staining Reagent	5 mL	RTU
Mounting Media	5 mL	RTU
Control Slide	1 slide (Optional)	FFPE
Datasheet	1 Copy	
Manual	1 Copy	

Storage Instructions

All the reagents are stored at 2-8°C. The kit is stable for 6 months from the date of receipt.

Background

HECTD3 (HECT domain-containing protein 3) may be involved in the regulation of mitotic metaphase/anaphase transition. It can specifically ubiquitinate TRIOBP and target it for proteasomal degradation and it can also mediate the ubiquitination of STX8. HECTD3 is a new oncogenic E3 ligase in human prostate cancer. HECTD3 may facilitate cell cycle progression via regulating ubiquitination and degradation of Tara.

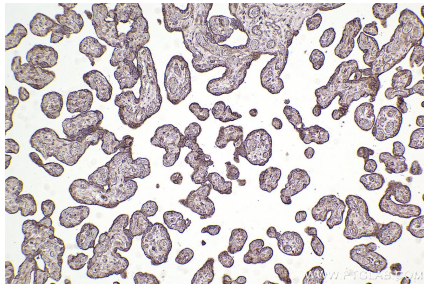
Synonyms

HECTD3, E3 ubiquitin-protein ligase HECTD3, EC:2.3.2

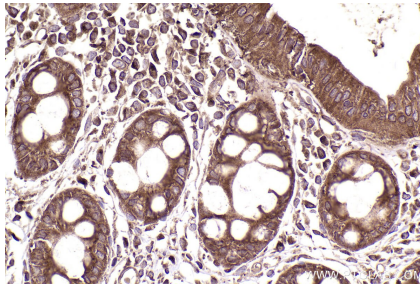
For technical support and original validation data for this product please contact:
T: 1 (888) 4PTGLAB (1-888-478-4522) (toll free in USA), or 1(312) 455-8498 (outside USA)
E: proteintech@ptglab.com
W: ptglab.com

This product is exclusively available under Proteintech Group brand and is not available to purchase from any other manufacturer.

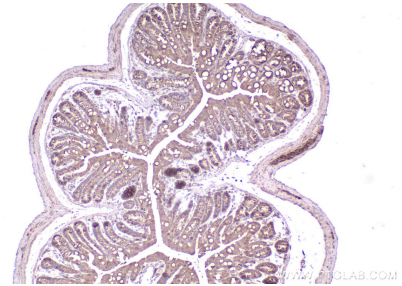
Selected Validation Data



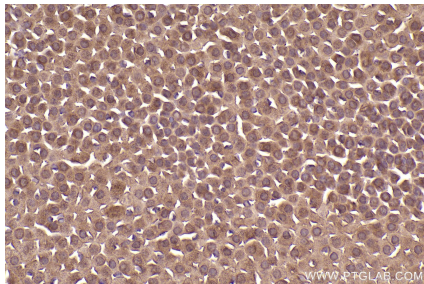
Immunohistochemical analysis of paraffin-embedded human placenta tissue slide using KHC2553 (HECTD3 IHC Kit).



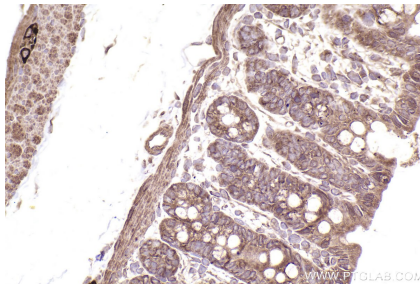
Immunohistochemical analysis of paraffin-embedded human rectal cancer tissue slide using KHC2553 (HECTD3 IHC Kit).



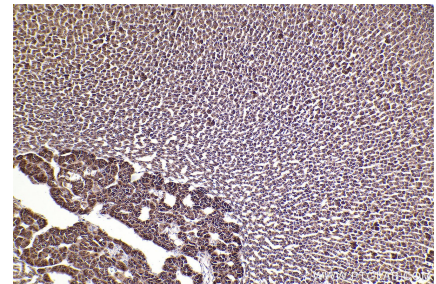
Immunohistochemical analysis of paraffin-embedded mouse colon tissue slide using KHC2553 (HECTD3 IHC Kit).



Immunohistochemical analysis of paraffin-embedded mouse adrenal gland tissue slide using KHC2553 (HECTD3 IHC Kit).



Immunohistochemical analysis of paraffin-embedded rat colon tissue slide using KHC2553 (HECTD3 IHC Kit).



Immunohistochemical analysis of paraffin-embedded rat adrenal gland tissue slide using KHC2553 (HECTD3 IHC Kit).