

# IHC*easy* UBR4 Ready-To-Use IHC Kit

Catalog Number: **KHC2554**

## General Information

Sample type:  
FFPE tissue  
Cited sample type:  
Reactivity:  
Human, Mouse, Rat  
Cited Reactivity:

Assay type:  
Immunohistochemistry  
Primary antibody type:  
Rabbit Polyclonal  
Secondary antibody type:  
Polymer-HRP-Goat anti-Rabbit

## Kit Component

Component	Size	Concentration
Antigen Retrieval Buffer	100 mL	50×
Washing Buffer	100 mL ×2	20×
Blocking Buffer	5 mL	RTU
Primary Antibody	5 mL	RTU
Secondary Antibody	5 mL	RTU
Chromogen Component A	0.2 mL	RTU
Chromogen Component B	4 mL	RTU
Signal Enhancer	5 mL	RTU
Counter Staining Reagent	5 mL	RTU
Mounting Media	5 mL	RTU
Control Slide	1 slide (Optional)	FFPE
Datasheet	1 Copy	
Manual	1 Copy	

## Storage Instructions

All the reagents are stored at 2-8°C. The kit is stable for 6 months from the date of receipt.

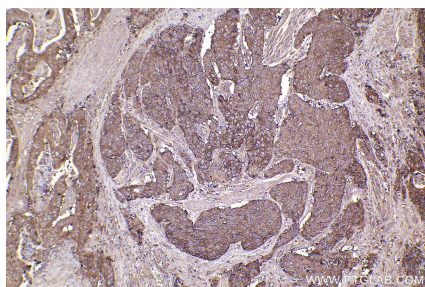
## Background

UBR4 (ubiquitin N-recognin domain-containing E3 ligase 4), also named P600, is an E3 ligase that can bind N-end rule substrates. UBR4-deficient mice die during embryogenesis and exhibit pleiotropic abnormalities. UBR4 plays a role in membrane morphogenesis and extracellular matrix-mediated cell survival and signaling, human papillomavirus (HPV) E7-mediated cellular immortalization, and migration and development of neurons.

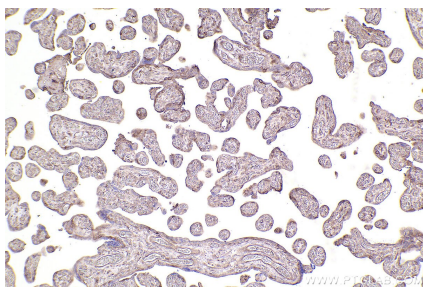
## Synonyms

UBR4,600 kDa retinoblastoma protein-associated fac

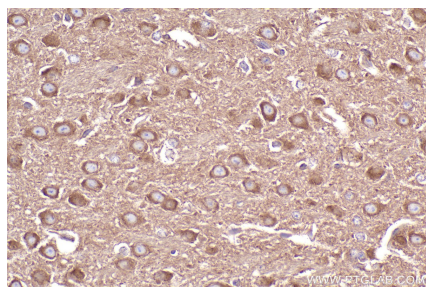
## Selected Validation Data



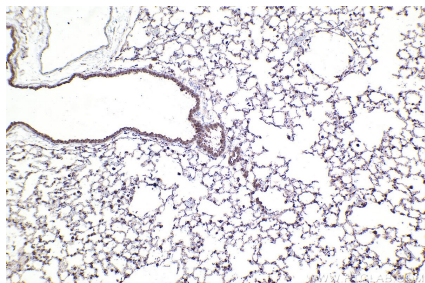
Immunohistochemical analysis of paraffin-embedded human stomach cancer tissue slide using KHC2554 (UBR4 IHC Kit).



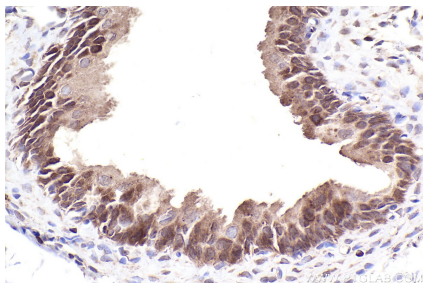
Immunohistochemical analysis of paraffin-embedded human placenta tissue slide using KHC2554 (UBR4 IHC Kit).



Immunohistochemical analysis of paraffin-embedded mouse brain tissue slide using KHC2554 (UBR4 IHC Kit).



Immunohistochemical analysis of paraffin-embedded mouse lung tissue slide using KHC2554 (UBR4 IHC Kit).



Immunohistochemical analysis of paraffin-embedded rat bladder tissue slide using KHC2554 (UBR4 IHC Kit).