

# IHC*easy* MLK4 Ready-To-Use IHC Kit

Catalog Number: **KHC2558**

## General Information

Sample type:  
FFPE tissue  
Cited sample type:  
Reactivity:  
Human, Mouse  
Cited Reactivity:

Assay type:  
Immunohistochemistry  
Primary antibody type:  
Rabbit Polyclonal  
Secondary antibody type:  
Polymer-HRP-Goat anti-Rabbit

## Kit Component

Component	Size	Concentration
Antigen Retrieval Buffer	100 mL	50×
Washing Buffer	100 mL ×2	20×
Blocking Buffer	5 mL	RTU
Primary Antibody	5 mL	RTU
Secondary Antibody	5 mL	RTU
Chromogen Component A	0.2 mL	RTU
Chromogen Component B	4 mL	RTU
Signal Enhancer	5 mL	RTU
Counter Staining Reagent	5 mL	RTU
Mounting Media	5 mL	RTU
Control Slide	1 slide (Optional)	FFPE
Datasheet	1 Copy	
Manual	1 Copy	

## Storage Instructions

All the reagents are stored at 2-8°C. The kit is stable for 6 months from the date of receipt.

## Background

MLK4 belongs to the MAP kinase kinase kinase subfamily. The MLK family members are characterized by the presence of signature sequences of Ser/Thr and Tyr kinases within their catalytic domain. The MLK1-4 contains an aminoterminal Src-Homology (SH3) domain, followed by the kinase domain, a leucine-zipper region, and a Cdc42/Rac-interactive binding (CRIB) motif. MLK4 expressed in two splicing variants, MLK4 $\alpha$  and MLK4 $\beta$ . The difference of these two isoforms is located in their C-terminal portion. The negative effect of MLK4 on LPS-induced ERK and JNK activation could be very important in controlling the level of cytokine expression, and thus maintaining the balance of inflammatory responses.

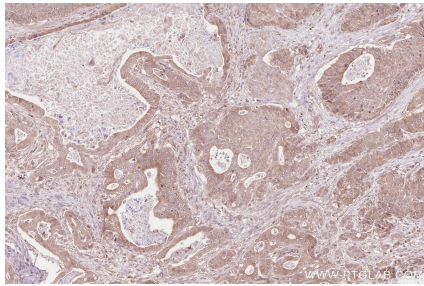
## Synonyms

MLK4, EC:2.7.11.25, KIAA1804, MAP3K21, Mitogen-activat

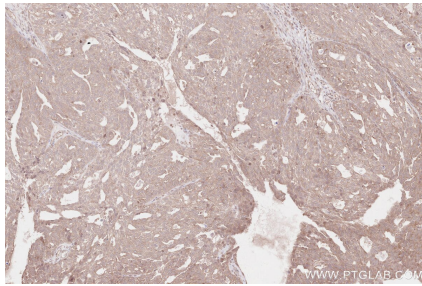
For technical support and original validation data for this product please contact:  
T: 1 (888) 4PTGLAB (1-888-478-4522) (toll free in USA), or 1(312) 455-8498 (outside USA)  
E: [proteintech@ptglab.com](mailto:proteintech@ptglab.com)  
W: [ptglab.com](http://ptglab.com)

This product is exclusively available under Proteintech Group brand and is not available to purchase from any other manufacturer.

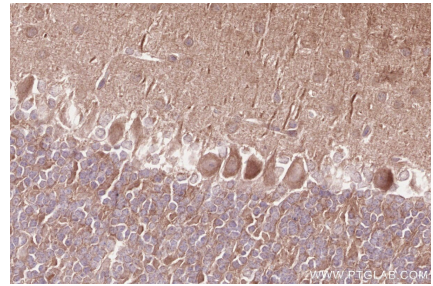
## Selected Validation Data



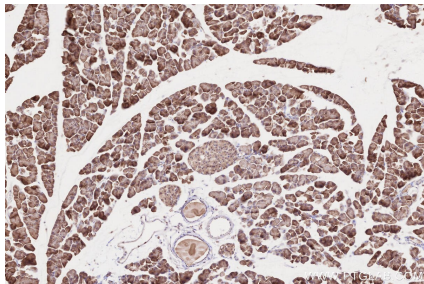
Immunohistochemical analysis of paraffin-embedded human stomach cancer tissue slide using KHC2558 (MLK4 IHC Kit).



Immunohistochemical analysis of paraffin-embedded human ovary cancer tissue slide using KHC2558 (MLK4 IHC Kit).



Immunohistochemical analysis of paraffin-embedded mouse cerebellum tissue slide using KHC2558 (MLK4 IHC Kit).



Immunohistochemical analysis of paraffin-embedded mouse pancreas tissue slide using KHC2558 (MLK4 IHC Kit).