

IHC*easy* LAMTOR1 Ready-To-Use IHC Kit

Catalog Number: **KHC2577**

General Information

Sample type:
FFPE tissue
Cited sample type:
Reactivity:
Human, Mouse, Rat
Cited Reactivity:

Assay type:
Immunohistochemistry
Primary antibody type:
Rabbit Polyclonal
Secondary antibody type:
Polymer-HRP-Goat anti-Rabbit

Kit Component

Component	Size	Concentration
Antigen Retrieval Buffer	100 mL	50×
Washing Buffer	100 mL ×2	20×
Blocking Buffer	5 mL	RTU
Primary Antibody	5 mL	RTU
Secondary Antibody	5 mL	RTU
Chromogen Component A	0.2 mL	RTU
Chromogen Component B	4 mL	RTU
Signal Enhancer	5 mL	RTU
Counter Staining Reagent	5 mL	RTU
Mounting Media	5 mL	RTU
Control Slide	1 slide (Optional)	FFPE
Datasheet	1 Copy	
Manual	1 Copy	

Storage Instructions

All the reagents are stored at 2-8°C. The kit is stable for 6 months from the date of receipt.

Background

LAMTOR1 (Late Endosome/Lysosome-Associated Membrane Protein 1) is a membrane protein specifically localized to the surface of late endosomes/lysosomes and is involved in lysosomal transport and maturation. LAMTOR1 is a key component of the lysosomal articulating protein complex Ragulator, which is required for the localization of the Ragulator complex to lysosomes. LAMTOR1 is involved in autophagy, cell growth, immune regulation, cancer development, and regulatory pathways of glucose metabolism. Recent studies have shown that in calorie restriction, lithocholic acid activates AMPK through the glucose-sensing pathway (the lysosomal pathway) and the body senses the metabolic signals induced by calorie restriction and exerts its role in slowing down the effects of aging and prolonging the lifespan, whereas deletion of LAMTOR1 results in the inability of AMPK to be activated in order to play its role.

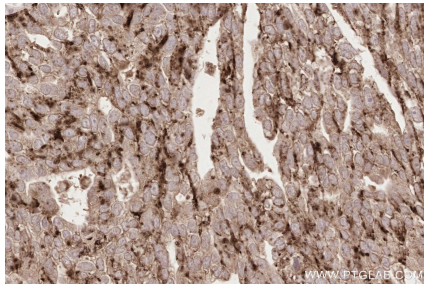
Synonyms

C11orf59,LAMTOR1,Late endosomal/lysosomal adaptor

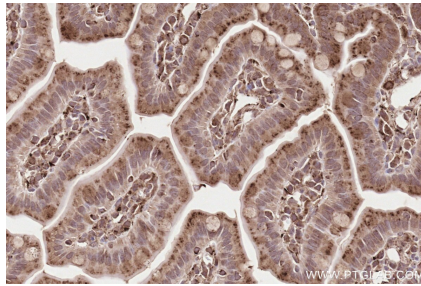
For technical support and original validation data for this product please contact:
T: 1 (888) 4PTGLAB (1-888-478-4522) (toll free in USA), or 1(312) 455-8498 (outside USA)
E: proteintech@ptglab.com
W: ptglab.com

This product is exclusively available under Proteintech Group brand and is not available to purchase from any other manufacturer.

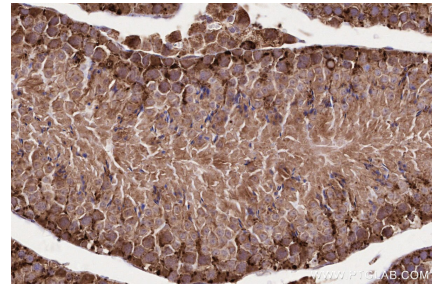
Selected Validation Data



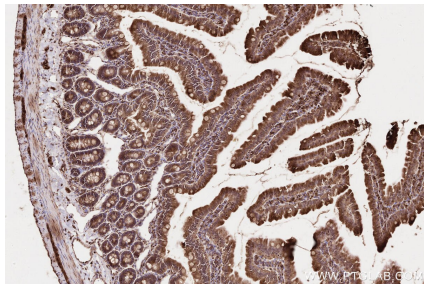
Immunohistochemical analysis of paraffin-embedded human ovary cancer tissue slide using KHC2577 (LAMTOR1 IHC Kit).



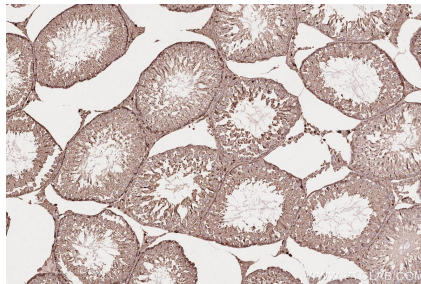
Immunohistochemical analysis of paraffin-embedded mouse small intestine tissue slide using KHC2577 (LAMTOR1 IHC Kit).



Immunohistochemical analysis of paraffin-embedded mouse testis tissue slide using KHC2577 (LAMTOR1 IHC Kit).



Immunohistochemical analysis of paraffin-embedded rat small intestine tissue slide using KHC2577 (LAMTOR1 IHC Kit).



Immunohistochemical analysis of paraffin-embedded rat testis tissue slide using KHC2577 (LAMTOR1 IHC Kit).