

IHC*easy* PHF17 Ready-To-Use IHC Kit

Catalog Number: **KHC2579**

General Information

Sample type:
FFPE tissue
Cited sample type:
Reactivity:
Human, Mouse, Rat
Cited Reactivity:

Assay type:
Immunohistochemistry
Primary antibody type:
Rabbit Polyclonal
Secondary antibody type:
Polymer-HRP-Goat anti-Rabbit

Kit Component

| Component | Size | Concentration |
|--------------------------|--------------------|---------------|
| Antigen Retrieval Buffer | 100 mL | 50× |
| Washing Buffer | 100 mL ×2 | 20× |
| Blocking Buffer | 5 mL | RTU |
| Primary Antibody | 5 mL | RTU |
| Secondary Antibody | 5 mL | RTU |
| Chromogen Component A | 0.2 mL | RTU |
| Chromogen Component B | 4 mL | RTU |
| Signal Enhancer | 5 mL | RTU |
| Counter Staining Reagent | 5 mL | RTU |
| Mounting Media | 5 mL | RTU |
| Control Slide | 1 slide (Optional) | FFPE |
| Datasheet | 1 Copy | |
| Manual | 1 Copy | |

Storage Instructions

All the reagents are stored at 2-8°C. The kit is stable for 6 months from the date of receipt.

Background

PHF17 was identified as a protein partner of the von Hippel-Lindau tumor suppressor pVHL. It is one component of the HBO1 complex which has a histone H4-specific acetyltransferase activity, a reduced activity toward histone H3 and is responsible for the bulk of histone H4 acetylation in vivo. It can act as a transcriptional coactivator that promote acetylation of nucleosomal histone H4 by KAT5. In addition, it ubiquitinates both phosphorylated and non-phosphorylated β -catenin and therefore regulates canonical Wnt signaling in both Wnt-off and Wnt-on phases.

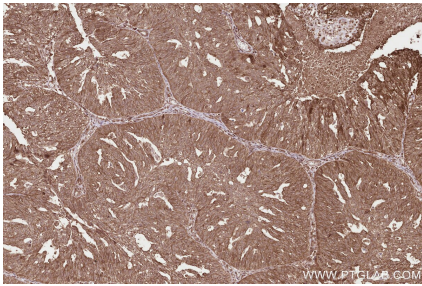
Synonyms

PHF17, Jade family PHD finger protein 1, JADE1, PHF 1

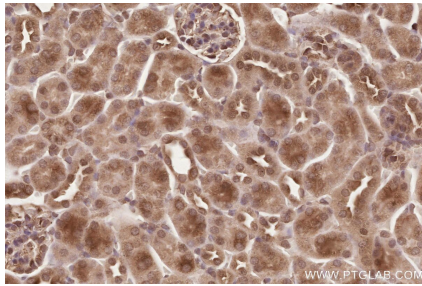
For technical support and original validation data for this product please contact:
T: 1 (888) 4PTGLAB (1-888-478-4522) (toll free in USA), or 1(312) 455-8498 (outside USA)
E: proteintech@ptglab.com
W: ptglab.com

This product is exclusively available under Proteintech Group brand and is not available to purchase from any other manufacturer.

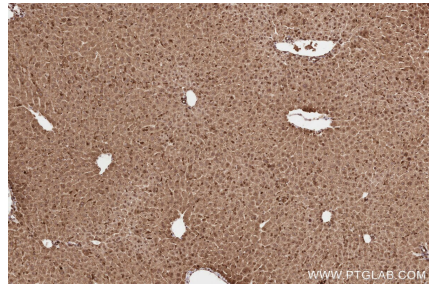
Selected Validation Data



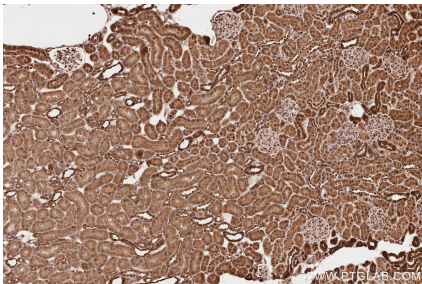
Immunohistochemical analysis of paraffin-embedded human ovary cancer tissue slide using KHC2579 (PHF17 IHC Kit).



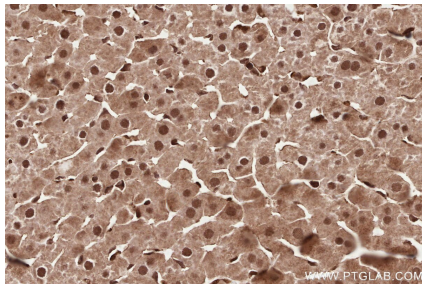
Immunohistochemical analysis of paraffin-embedded mouse kidney tissue slide using KHC2579 (PHF17 IHC Kit).



Immunohistochemical analysis of paraffin-embedded mouse liver tissue slide using KHC2579 (PHF17 IHC Kit).



Immunohistochemical analysis of paraffin-embedded rat kidney tissue slide using KHC2579 (PHF17 IHC Kit).



Immunohistochemical analysis of paraffin-embedded rat liver tissue slide using KHC2579 (PHF17 IHC Kit).