

IHC*easy* SHLD3 Ready-To-Use IHC Kit

Catalog Number: **KHC2604**

General Information

Sample type:
FFPE tissue
Cited sample type:
Reactivity:
Human, Mouse, Rat
Cited Reactivity:

Assay type:
Immunohistochemistry
Primary antibody type:
Rabbit Polyclonal
Secondary antibody type:
Polymer-HRP-Goat anti-Rabbit

Kit Component

Component	Size	Concentration
Antigen Retrieval Buffer	100 mL	50×
Washing Buffer	100 mL ×2	20×
Blocking Buffer	5 mL	RTU
Primary Antibody	5 mL	RTU
Secondary Antibody	5 mL	RTU
Chromogen Component A	0.2 mL	RTU
Chromogen Component B	4 mL	RTU
Signal Enhancer	5 mL	RTU
Counter Staining Reagent	5 mL	RTU
Mounting Media	5 mL	RTU
Control Slide	1 slide (Optional)	FFPE
Datasheet	1 Copy	
Manual	1 Copy	

Storage Instructions

All the reagents are stored at 2-8°C. The kit is stable for 6 months from the date of receipt.

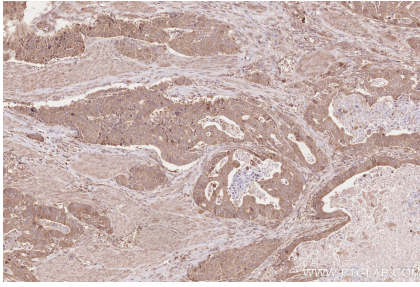
Background

SHLD3 (shieldin complex subunit 3), also known as RINN1 or CTC-534A2.2. It is located in Chromosome and expressed in monocyte. The gene is a component of the shieldin complex, which plays an important role in repair of DNA double-stranded breaks (DSBs). It has been found that the proper function of MAD2L2 in shieldin requires its dimerization, and the interaction between MAD2L2 and SHLD3 is mediated and accelerated by SHLD2. The dimerization defect MAD2L2 damages the assembly of shieldin and cannot promote the NHEJ. In addition, the dimerization of MAD2L2 and the existence of SHLD3 allow shieldin to interact with TRIP13 ATPase.

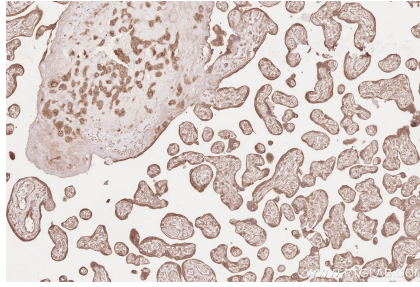
For technical support and original validation data for this product please contact:
T: 1 (888) 4PTGLAB (1-888-478-4522) (toll free in USA), or 1(312) 455-8498 (outside USA)
E: proteintech@ptglab.com
W: ptglab.com

This product is exclusively available under Proteintech Group brand and is not available to purchase from any other manufacturer.

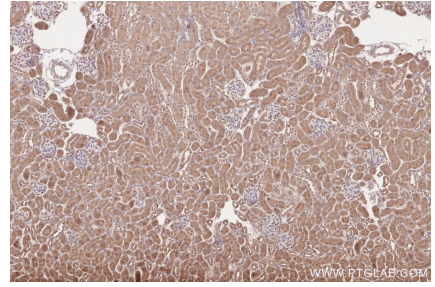
Selected Validation Data



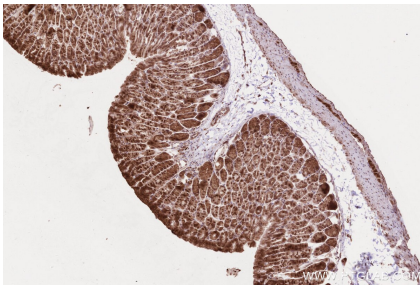
Immunohistochemical analysis of paraffin-embedded human stomach cancer tissue slide using KHC2604 (SHLD3 IHC Kit).



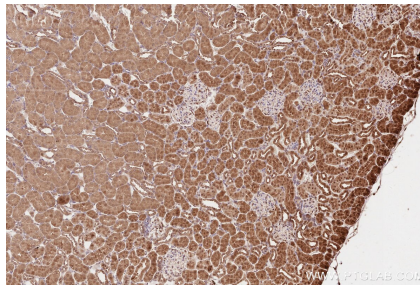
Immunohistochemical analysis of paraffin-embedded human placenta tissue slide using KHC2604 (SHLD3 IHC Kit).



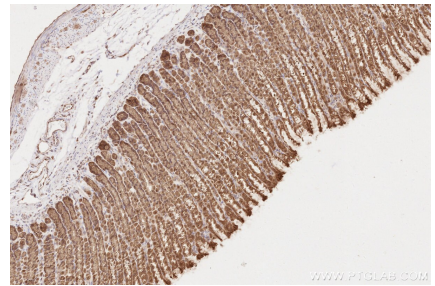
Immunohistochemical analysis of paraffin-embedded mouse kidney tissue slide using KHC2604 (SHLD3 IHC Kit).



Immunohistochemical analysis of paraffin-embedded mouse stomach tissue slide using KHC2604 (SHLD3 IHC Kit).



Immunohistochemical analysis of paraffin-embedded rat kidney tissue slide using KHC2604 (SHLD3 IHC Kit).



Immunohistochemical analysis of paraffin-embedded rat stomach tissue slide using KHC2604 (SHLD3 IHC Kit).