

# IHC*easy* COPS6 Ready-To-Use IHC Kit

Catalog Number: **KHC2614**

## General Information

**Sample type:**  
FFPE tissue

**Cited sample type:**

**Reactivity:**  
Human, Mouse, Rat

**Cited Reactivity:**

**Assay type:**  
Immunohistochemistry

**Primary antibody type:**  
Rabbit Polyclonal

**Secondary antibody type:**  
Polymer-HRP-Goat anti-Rabbit

## Kit Component

Component	Size	Concentration
Antigen Retrieval Buffer	100 mL	50×
Washing Buffer	100 mL ×2	20×
Blocking Buffer	5 mL	RTU
Primary Antibody	5 mL	RTU
Secondary Antibody	5 mL	RTU
Chromogen Component A	0.2 mL	RTU
Chromogen Component B	4 mL	RTU
Signal Enhancer	5 mL	RTU
Counter Staining Reagent	5 mL	RTU
Mounting Media	5 mL	RTU
Control Slide	1 slide (Optional)	FFPE
Datasheet	1 Copy	
Manual	1 Copy	

## Storage Instructions

All the reagents are stored at 2-8°C. The kit is stable for 6 months from the date of receipt.

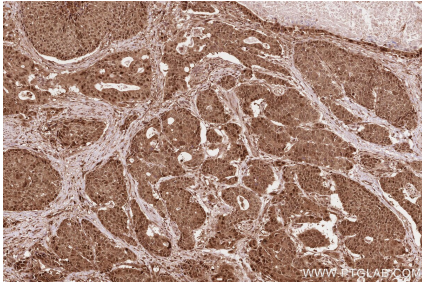
## Background

The COPS6 protein, also named mov34, is a 34 kDa subunit of COP9 signalosome, a highly conserved eight-subunit protein complex that functions as an important regulator in multiple signaling pathways. This protein belongs to translation initiation factor 3 (eIF3) superfamily. It is involved in the regulation of cell cycle and acts as the regulatory subunit of the 26S proteasome.

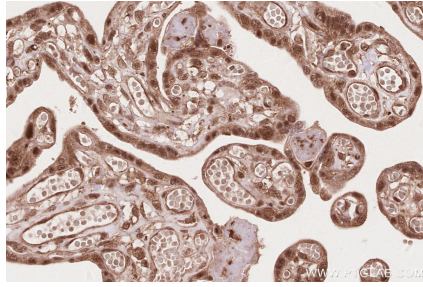
## Synonyms

COPS6, CSN6, hVIP, JAB1-containing signalosome subunit

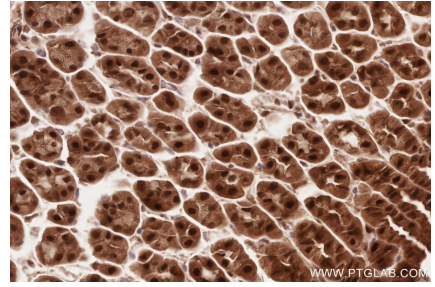
## Selected Validation Data



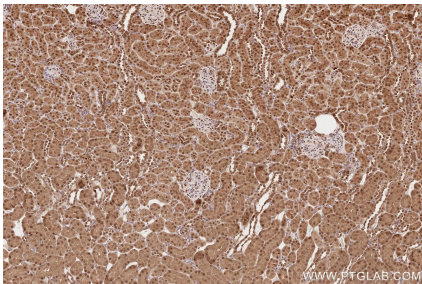
Immunohistochemical analysis of paraffin-embedded human stomach cancer tissue slide using KHC2614 (COPS6 IHC Kit).



Immunohistochemical analysis of paraffin-embedded human placenta tissue slide using KHC2614 (COPS6 IHC Kit).



Immunohistochemical analysis of paraffin-embedded mouse stomach tissue slide using KHC2614 (COPS6 IHC Kit).



Immunohistochemical analysis of paraffin-embedded rat kidney tissue slide using KHC2614 (COPS6 IHC Kit).