

IHC*easy* FGD2 Ready-To-Use IHC Kit

Catalog Number: **KHC2626**

General Information

Sample type:
FFPE tissue
Cited sample type:
Reactivity:
Human
Cited Reactivity:

Assay type:
Immunohistochemistry
Primary antibody type:
Rabbit Polyclonal
Secondary antibody type:
Polymer-HRP-Goat anti-Rabbit

Kit Component

Component	Size	Concentration
Antigen Retrieval Buffer	100 mL	50×
Washing Buffer	100 mL ×2	20×
Blocking Buffer	5 mL	RTU
Primary Antibody	5 mL	RTU
Secondary Antibody	5 mL	RTU
Chromogen Component A	0.2 mL	RTU
Chromogen Component B	4 mL	RTU
Signal Enhancer	5 mL	RTU
Counter Staining Reagent	5 mL	RTU
Mounting Media	5 mL	RTU
Control Slide	1 slide (Optional)	FFPE
Datasheet	1 Copy	
Manual	1 Copy	

Storage Instructions

All the reagents are stored at 2-8°C. The kit is stable for 6 months from the date of receipt.

Background

FGD2 is a member of the formin family of proteins, which are known for their role in regulating the assembly of actin filaments. Formins are characterized by their ability to nucleate and elongate actin filaments, and they play a crucial role in processes that require dynamic actin structures, such as cell motility and cell division. Mutations or alterations in FGD2 have been associated with certain developmental disorders and diseases. For example, mutations in FGD2 are a cause of faciogenital dysplasia (Aarskog-Scott syndrome), a condition characterized by facial and genital abnormalities and short stature.

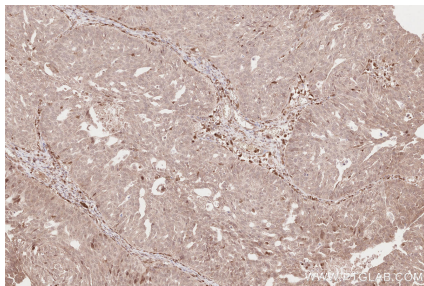
Synonyms

FGD2, FYVE, RhoGEF and PH domain-containing protein

For technical support and original validation data for this product please contact:
T: 1 (888) 4PTGLAB (1-888-478-4522) (toll free in USA), or 1(312) 455-8498 (outside USA)
E: proteintech@ptglab.com
W: ptglab.com

This product is exclusively available under Proteintech Group brand and is not available to purchase from any other manufacturer.

Selected Validation Data



Immunohistochemical analysis of paraffin-embedded human ovary cancer tissue slide using KHC2626 (FGD2 IHC Kit).