

IHC*easy* SAMD9L Ready-To-Use IHC Kit

Catalog Number: **KHC2647**

General Information

Sample type:
FFPE tissue
Cited sample type:
Reactivity:
Human, Mouse, Rat
Cited Reactivity:

Assay type:
Immunohistochemistry
Primary antibody type:
Rabbit Polyclonal
Secondary antibody type:
Polymer-HRP-Goat anti-Rabbit

Kit Component

Component	Size	Concentration
Antigen Retrieval Buffer	100 mL	50×
Washing Buffer	100 mL ×2	20×
Blocking Buffer	5 mL	RTU
Primary Antibody	5 mL	RTU
Secondary Antibody	5 mL	RTU
Chromogen Component A	0.2 mL	RTU
Chromogen Component B	4 mL	RTU
Signal Enhancer	5 mL	RTU
Counter Staining Reagent	5 mL	RTU
Mounting Media	5 mL	RTU
Control Slide	1 slide (Optional)	FFPE
Datasheet	1 Copy	
Manual	1 Copy	

Storage Instructions

All the reagents are stored at 2-8°C. The kit is stable for 6 months from the date of receipt.

Background

Sterile alpha motif domain-containing protein 9-like(SAMD9L), also named C7orf6, DRIF2, KIAA2005, and UEF, is a cytoplasmic protein that acts as a tumor suppressor but also plays a key role in cell proliferation and the innate immune response to viral infection. SAMD9L protein is an endosome fusion facilitator that causes myeloid malignancies in mice similar to human diseases with monosomy 7. The SAMD9L protein also appears to play an important role in the brain, particularly the part of the brain that coordinates movement (the cerebellum).

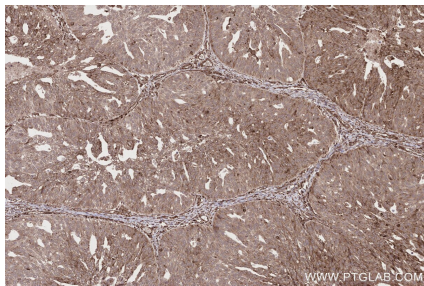
Synonyms

SAMD9L,C7orf6,DRIF2,KIAA2005,SAM domain-containing

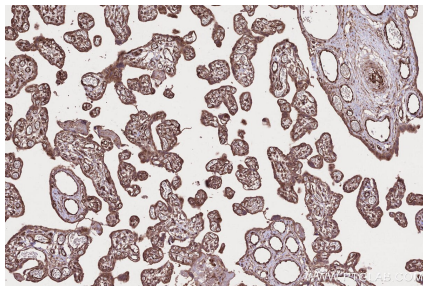
For technical support and original validation data for this product please contact:
T: 1 (888) 4PTGLAB (1-888-478-4522) (toll free in USA), or 1(312) 455-8498 (outside USA)
E: proteintech@ptglab.com
W: ptglab.com

This product is exclusively available under Proteintech Group brand and is not available to purchase from any other manufacturer.

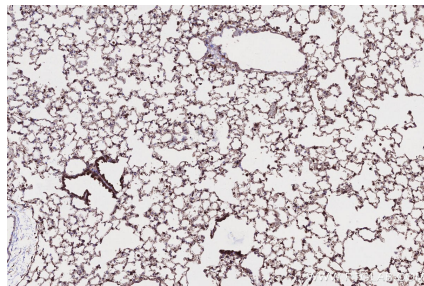
Selected Validation Data



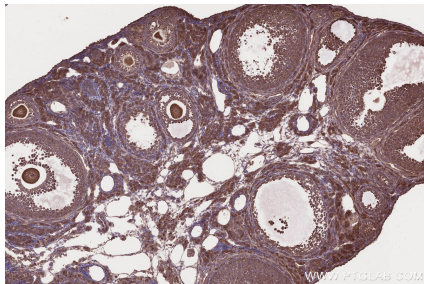
Immunohistochemical analysis of paraffin-embedded human ovary cancer tissue slide using KHC2647 (SAMD9L IHC Kit).



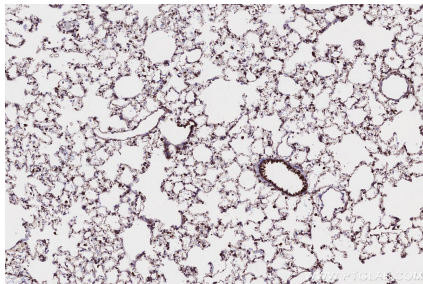
Immunohistochemical analysis of paraffin-embedded human placenta tissue slide using KHC2647 (SAMD9L IHC Kit).



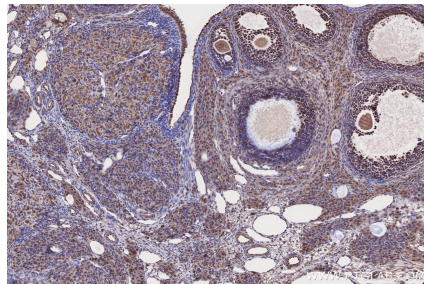
Immunohistochemical analysis of paraffin-embedded mouse lung tissue slide using KHC2647 (SAMD9L IHC Kit).



Immunohistochemical analysis of paraffin-embedded mouse ovary tissue slide using KHC2647 (SAMD9L IHC Kit).



Immunohistochemical analysis of paraffin-embedded rat lung tissue slide using KHC2647 (SAMD9L IHC Kit).



Immunohistochemical analysis of paraffin-embedded rat ovary tissue slide using KHC2647 (SAMD9L IHC Kit).