

IHC*easy* PNPLA6 Ready-To-Use IHC Kit

Catalog Number: **KHC2655**

General Information

Sample type:
FFPE tissue
Cited sample type:
Reactivity:
Human, Rat
Cited Reactivity:

Assay type:
Immunohistochemistry
Primary antibody type:
Rabbit Polyclonal
Secondary antibody type:
Polymer-HRP-Goat anti-Rabbit

Kit Component

Component	Size	Concentration
Antigen Retrieval Buffer	100 mL	50×
Washing Buffer	100 mL ×2	20×
Blocking Buffer	5 mL	RTU
Primary Antibody	5 mL	RTU
Secondary Antibody	5 mL	RTU
Chromogen Component A	0.2 mL	RTU
Chromogen Component B	4 mL	RTU
Signal Enhancer	5 mL	RTU
Counter Staining Reagent	5 mL	RTU
Mounting Media	5 mL	RTU
Control Slide	1 slide (Optional)	FFPE
Datasheet	1 Copy	
Manual	1 Copy	

Storage Instructions

All the reagents are stored at 2-8°C. The kit is stable for 6 months from the date of receipt.

Background

PNPLA6(patatin-like phospholipase domain-containing protein 6) is also named as NTE(neuropathy target esterase) and belongs to the NTE family. It plays an important role in motor neuron development and implicated overexpression of BMP signaling. Defects in PNPLA6 are the cause of spastic paraplegia autosomal recessive type 39 (SPG39). This protein has a glycosylation site that it can be glycosylated.

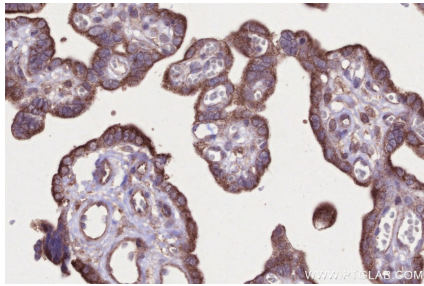
Synonyms

PNPLA6,EC:3.1.1.5,NTE,NTEMND,Patatin-like phosphol

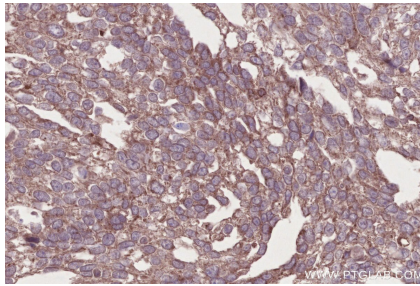
For technical support and original validation data for this product please contact:
T: 1 (888) 4PTGLAB (1-888-478-4522) (toll free in USA), or 1(312) 455-8498 (outside USA)
E: proteintech@ptglab.com
W: ptglab.com

This product is exclusively available under Proteintech Group brand and is not available to purchase from any other manufacturer.

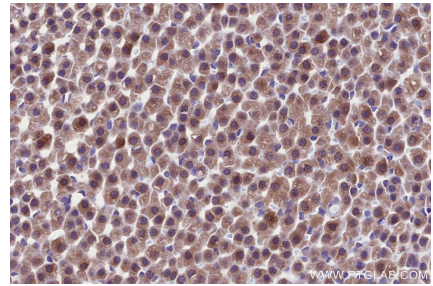
Selected Validation Data



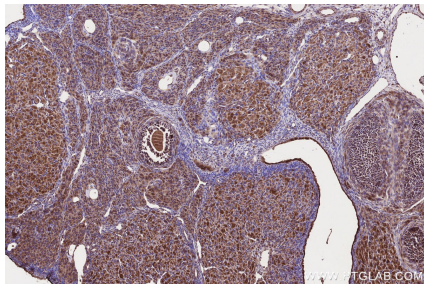
Immunohistochemical analysis of paraffin-embedded human placenta tissue slide using KHC2655 (PNPLA6 IHC Kit).



Immunohistochemical analysis of paraffin-embedded human ovary cancer tissue slide using KHC2655 (PNPLA6 IHC Kit).



Immunohistochemical analysis of paraffin-embedded rat adrenal gland tissue slide using KHC2655 (PNPLA6 IHC Kit).



Immunohistochemical analysis of paraffin-embedded rat ovary tissue slide using KHC2655 (PNPLA6 IHC Kit).