

# IHC*easy* HACE1 Ready-To-Use IHC Kit

Catalog Number: **KHC2661**

## General Information

Sample type:  
FFPE tissue  
Cited sample type:  
Reactivity:  
Human, Mouse, Rat  
Cited Reactivity:

Assay type:  
Immunohistochemistry  
Primary antibody type:  
Rabbit Polyclonal  
Secondary antibody type:  
Polymer-HRP-Goat anti-Rabbit

## Kit Component

Component	Size	Concentration
Antigen Retrieval Buffer	100 mL	50×
Washing Buffer	100 mL ×2	20×
Blocking Buffer	5 mL	RTU
Primary Antibody	5 mL	RTU
Secondary Antibody	5 mL	RTU
Chromogen Component A	0.2 mL	RTU
Chromogen Component B	4 mL	RTU
Signal Enhancer	5 mL	RTU
Counter Staining Reagent	5 mL	RTU
Mounting Media	5 mL	RTU
Control Slide	1 slide (Optional)	FFPE
Datasheet	1 Copy	
Manual	1 Copy	

## Storage Instructions

All the reagents are stored at 2-8°C. The kit is stable for 6 months from the date of receipt.

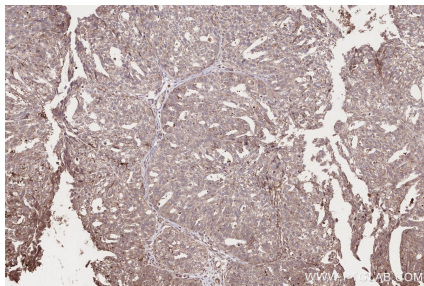
## Background

HACE1(E3 ubiquitin-protein ligase HACE1) also named as KIAA1320, has a tumor-suppressor function dependent on its E3 ligase activity and controlling cell cycle progression during cell stress through degradation of cyclin D1. It belongs to the HECT family of E3 ubiquitin protein ligase.

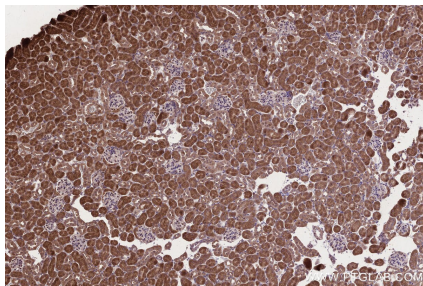
## Synonyms

HACE1,E3 ubiquitin-protein ligase HACE1,EC:2.3.2.2

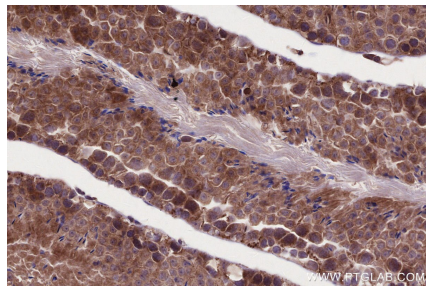
## Selected Validation Data



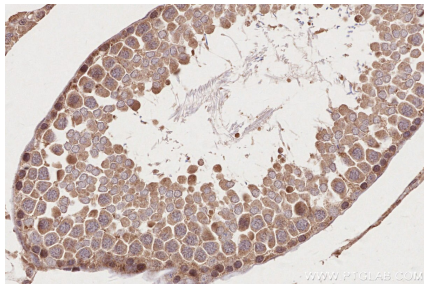
Immunohistochemical analysis of paraffin-embedded human ovary cancer tissue slide using KHC2661 (HACE1 IHC Kit).



Immunohistochemical analysis of paraffin-embedded mouse kidney tissue slide using KHC2661 (HACE1 IHC Kit).



Immunohistochemical analysis of paraffin-embedded mouse testis tissue slide using KHC2661 (HACE1 IHC Kit).



Immunohistochemical analysis of paraffin-embedded rat testis tissue slide using KHC2661 (HACE1 IHC Kit).