

IHC*easy* MOSPD2 Ready-To-Use IHC Kit

Catalog Number: **KHC2700**

General Information

Sample type:
FFPE tissue
Cited sample type:
Reactivity:
Human, Mouse, Rat
Cited Reactivity:

Assay type:
Immunohistochemistry
Primary antibody type:
Rabbit Recombinant
Secondary antibody type:
Polymer-HRP-Goat anti-Rabbit

Kit Component

Component	Size	Concentration
Antigen Retrieval Buffer	100 mL	50×
Washing Buffer	100 mL ×2	20×
Blocking Buffer	5 mL	RTU
Primary Antibody	5 mL	RTU
Secondary Antibody	5 mL	RTU
Chromogen Component A	0.2 mL	RTU
Chromogen Component B	4 mL	RTU
Signal Enhancer	5 mL	RTU
Counter Staining Reagent	5 mL	RTU
Mounting Media	5 mL	RTU
Control Slide	1 slide (Optional)	FFPE
Datasheet	1 Copy	
Manual	1 Copy	

Storage Instructions

All the reagents are stored at 2-8°C. The kit is stable for 6 months from the date of receipt.

Background

MOSPD2 is a 518-amino acid protein containing an N-terminal CRAL/TRIO domain, a major sperm protein (MSP) domain, and a potential C-terminal transmembrane domain. MOSPD2 is a member of the vesicle-associated membrane protein-associated protein (VAP) family and one of the endoplasmic reticulum (ER) receptors that function as tether proteins to bridge ER and other organelles to build contacts.

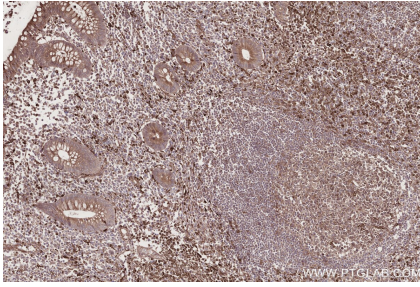
Synonyms

MOSPD2, Motile sperm domain-containing protein 2

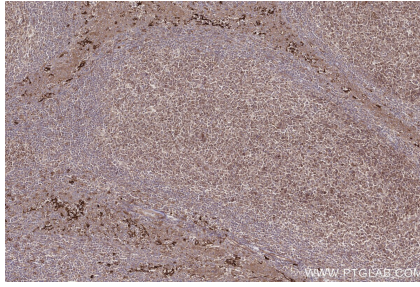
For technical support and original validation data for this product please contact:
T: 1 (888) 4PTGLAB (1-888-478-4522) (toll free in USA), or 1(312) 455-8498 (outside USA)
E: proteintech@ptglab.com
W: ptglab.com

This product is exclusively available under Proteintech Group brand and is not available to purchase from any other manufacturer.

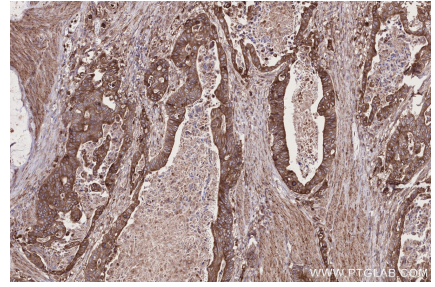
Selected Validation Data



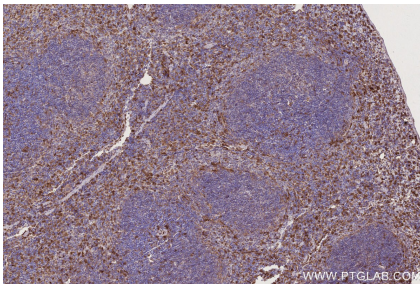
Immunohistochemical analysis of paraffin-embedded human appendicitis tissue slide using KHC2700 (MOSPD2 IHC Kit).



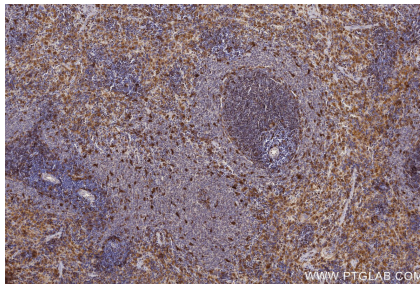
Immunohistochemical analysis of paraffin-embedded human tonsillitis tissue slide using KHC2700 (MOSPD2 IHC Kit).



Immunohistochemical analysis of paraffin-embedded human stomach cancer tissue slide using KHC2700 (MOSPD2 IHC Kit).



Immunohistochemical analysis of paraffin-embedded mouse spleen tissue slide using KHC2700 (MOSPD2 IHC Kit).



Immunohistochemical analysis of paraffin-embedded rat spleen tissue slide using KHC2700 (MOSPD2 IHC Kit).