

IHC*easy* SPATA22 Ready-To-Use IHC Kit

Catalog Number: **KHC2701**

General Information

Sample type:
FFPE tissue
Cited sample type:
Reactivity:
Human, Mouse
Cited Reactivity:

Assay type:
Immunohistochemistry
Primary antibody type:
Rabbit Polyclonal
Secondary antibody type:
Polymer-HRP-Goat anti-Rabbit

Kit Component

Component	Size	Concentration
Antigen Retrieval Buffer	100 mL	50×
Washing Buffer	100 mL ×2	20×
Blocking Buffer	5 mL	RTU
Primary Antibody	5 mL	RTU
Secondary Antibody	5 mL	RTU
Chromogen Component A	0.2 mL	RTU
Chromogen Component B	4 mL	RTU
Signal Enhancer	5 mL	RTU
Counter Staining Reagent	5 mL	RTU
Mounting Media	5 mL	RTU
Control Slide	1 slide (Optional)	FFPE
Datasheet	1 Copy	
Manual	1 Copy	

Storage Instructions

All the reagents are stored at 2-8°C. The kit is stable for 6 months from the date of receipt.

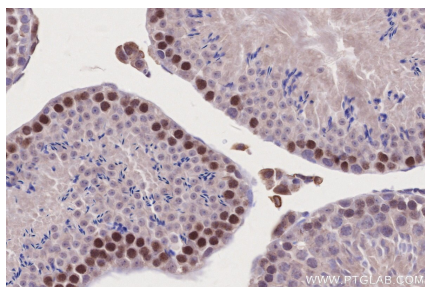
Background

Spata22 (NYD-SP20), a novel vertebrate-specific gene, is required for meiotic progress in mouse germ cells. It is essential for one or more key events of early meiotic prophase, as homologous chromosomes of mutant germ cells do not achieve normal synapsis or repair meiotic DNA double-strand breaks.

Synonyms

SPATA22, NYD SP20, SPATA 22, Spermatogenesis-associated protein 22, Testis development protein NYD-SP20

Selected Validation Data



Immunohistochemical analysis of paraffin-embedded mouse testis tissue slide using KHC2701 (SPATA22 IHC Kit).