

IHC*easy* RDH11 Ready-To-Use IHC Kit

Catalog Number: **KHC2712**

General Information

Sample type:
FFPE tissue
Cited sample type:
Reactivity:
Human, Mouse, Rat
Cited Reactivity:

Assay type:
Immunohistochemistry
Primary antibody type:
Rabbit Polyclonal
Secondary antibody type:
Polymer-HRP-Goat anti-Rabbit

Kit Component

Component	Size	Concentration
Antigen Retrieval Buffer	100 mL	50×
Washing Buffer	100 mL ×2	20×
Blocking Buffer	5 mL	RTU
Primary Antibody	5 mL	RTU
Secondary Antibody	5 mL	RTU
Chromogen Component A	0.2 mL	RTU
Chromogen Component B	4 mL	RTU
Signal Enhancer	5 mL	RTU
Counter Staining Reagent	5 mL	RTU
Mounting Media	5 mL	RTU
Control Slide	1 slide (Optional)	FFPE
Datasheet	1 Copy	
Manual	1 Copy	

Storage Instructions

All the reagents are stored at 2-8°C. The kit is stable for 6 months from the date of receipt.

Background

RDH11(Retinol dehydrogenase 11) is also named as ARSDR1(androgen-regulated short-chain dehydrogenase/reductase 1), PSDR1(prostate short-chain dehydrogenase/reductase 1) and belongs to the short-chain dehydrogenases/reductases (SDR) family. RDH11 is involved in steroid synthesis and/or degradation in normal and neoplastic prostate epithelium, and, as such, it may be a key enzyme involved in maintaining intracellular balance of steroid hormones in these cells. The deduced protein contains 318 amino acids, and the transcript contains 2 potential polyadenylation signals. It has 2 isoforms produced by alternative splicing.

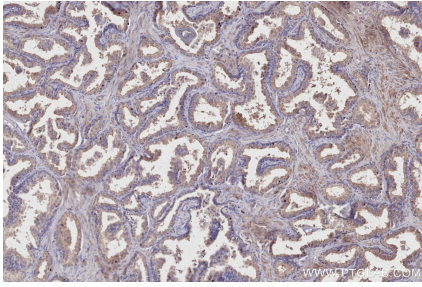
Synonyms

RDH11, Androgen-regulated short-chain dehydrogenase/reductase 1, ARSDR1, CGI-82, EC:1.1.1.300

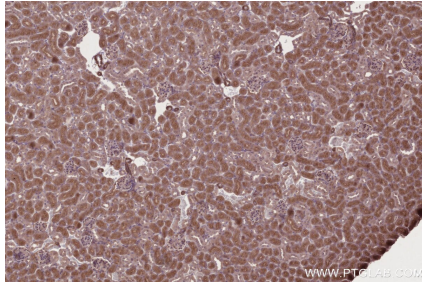
For technical support and original validation data for this product please contact:
T: 1 (888) 4PTGLAB (1-888-478-4522) (toll free in USA), or 1(312) 455-8498 (outside USA)
E: proteintech@ptglab.com
W: ptglab.com

This product is exclusively available under Proteintech Group brand and is not available to purchase from any other manufacturer.

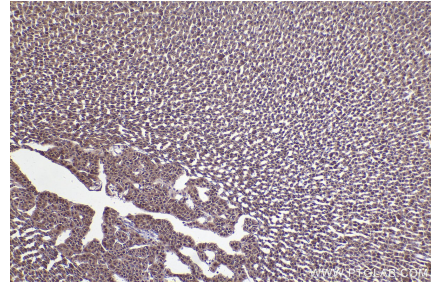
Selected Validation Data



Immunohistochemical analysis of paraffin-embedded human prostate hyperplasia tissue slide using KHC2712 (RDH11 IHC Kit).



Immunohistochemical analysis of paraffin-embedded mouse kidney tissue slide using KHC2712 (RDH11 IHC Kit).



Immunohistochemical analysis of paraffin-embedded rat adrenal gland tissue slide using KHC2712 (RDH11 IHC Kit).