

# IHC*easy* NEK7 Ready-To-Use IHC Kit

Catalog Number: **KHC2720**

## General Information

Sample type:  
FFPE tissue  
Cited sample type:  
Reactivity:  
Human, Mouse  
Cited Reactivity:

Assay type:  
Immunohistochemistry  
Primary antibody type:  
Rabbit Polyclonal  
Secondary antibody type:  
Polymer-HRP-Goat anti-Rabbit

## Kit Component

Component	Size	Concentration
Antigen Retrieval Buffer	100 mL	50×
Washing Buffer	100 mL ×2	20×
Blocking Buffer	5 mL	RTU
Primary Antibody	5 mL	RTU
Secondary Antibody	5 mL	RTU
Chromogen Component A	0.2 mL	RTU
Chromogen Component B	4 mL	RTU
Signal Enhancer	5 mL	RTU
Counter Staining Reagent	5 mL	RTU
Mounting Media	5 mL	RTU
Control Slide	1 slide (Optional)	FFPE
Datasheet	1 Copy	
Manual	1 Copy	

## Storage Instructions

All the reagents are stored at 2-8°C. The kit is stable for 6 months from the date of receipt.

## Background

Mammalian NIMA-related kinases (NEKs) represent a family of serine/threonine kinases, named NEK1-NEK11, which are implicated in the control of several aspects of mitosis and are involved in non-mitotic functions. NIMA-related kinase 7 (NEK7) is the smallest NIMA-related kinase (NEK) in mammals. NEK7 is identified as a highly conserved serine or threonine kinase, which is not only crucial for mitosis entry, cell cycle progression, cell division, and mitotic process, but also expressed in brain, heart, lung, liver, spleen, and other tissues.

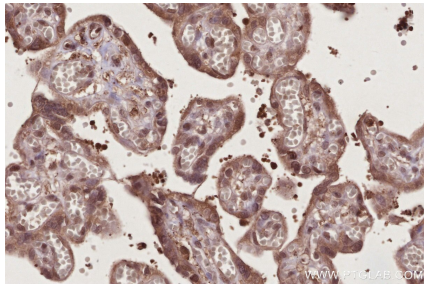
## Synonyms

NEK7, NimA related protein kinase 7

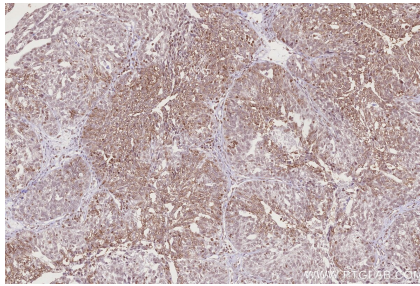
For technical support and original validation data for this product please contact:  
T: 1 (888) 4PTGLAB (1-888-478-4522) (toll free in USA), or 1(312) 455-8498 (outside USA)  
E: [proteintech@ptglab.com](mailto:proteintech@ptglab.com)  
W: [ptglab.com](http://ptglab.com)

This product is exclusively available under Proteintech Group brand and is not available to purchase from any other manufacturer.

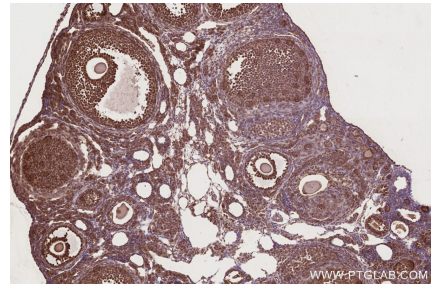
## Selected Validation Data



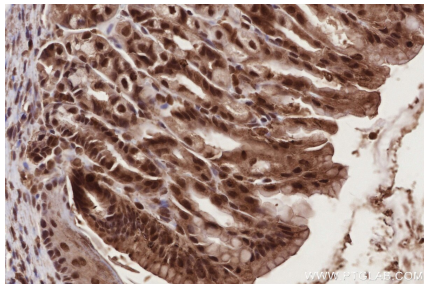
Immunohistochemical analysis of paraffin-embedded human placenta tissue slide using KHC2720 (NEK7 IHC Kit).



Immunohistochemical analysis of paraffin-embedded human ovary cancer tissue slide using KHC2720 (NEK7 IHC Kit).



Immunohistochemical analysis of paraffin-embedded mouse ovary tissue slide using KHC2720 (NEK7 IHC Kit).



Immunohistochemical analysis of paraffin-embedded mouse stomach tissue slide using KHC2720 (NEK7 IHC Kit).