

IHC*easy* RAB2B Ready-To-Use IHC Kit

Catalog Number: **KHC2732**

General Information

Sample type:
FFPE tissue
Cited sample type:
Reactivity:
Human, Mouse, Rat
Cited Reactivity:

Assay type:
Immunohistochemistry
Primary antibody type:
Rabbit Polyclonal
Secondary antibody type:
Polymer-HRP-Goat anti-Rabbit

Kit Component

Component	Size	Concentration
Antigen Retrieval Buffer	100 mL	50×
Washing Buffer	100 mL ×2	20×
Blocking Buffer	5 mL	RTU
Primary Antibody	5 mL	RTU
Secondary Antibody	5 mL	RTU
Chromogen Component A	0.2 mL	RTU
Chromogen Component B	4 mL	RTU
Signal Enhancer	5 mL	RTU
Counter Staining Reagent	5 mL	RTU
Mounting Media	5 mL	RTU
Control Slide	1 slide (Optional)	FFPE
Datasheet	1 Copy	
Manual	1 Copy	

Storage Instructions

All the reagents are stored at 2-8°C. The kit is stable for 6 months from the date of receipt.

Background

The protein belongs to the Rab family, members of which are small molecular weight guanosine triphosphatases (GTPases) that contain highly conserved domains involved in GTP binding and hydrolysis. The Rabs are membrane-bound proteins, involved in vesicular fusion and trafficking. This protein is a resident of pre-Golgi intermediates, and is required for protein transport from the endoplasmic reticulum (ER) to the Golgi complex. Primary antibody in this kit recognizes both RAB2A and RAB2B.

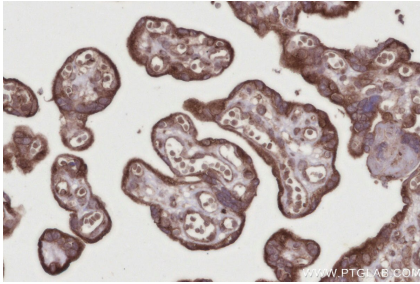
Synonyms

RAB2B, EC:3.6.5.2, Ras related protein Rab 2B, Ras-related protein Rab-2B

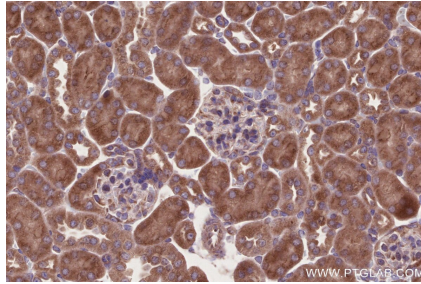
For technical support and original validation data for this product please contact:
T: 1 (888) 4PTGLAB (1-888-478-4522) (toll free in USA), or 1(312) 455-8498 (outside USA)
E: proteintech@ptglab.com
W: ptglab.com

This product is exclusively available under Proteintech Group brand and is not available to purchase from any other manufacturer.

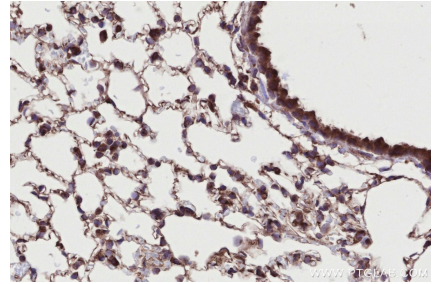
Selected Validation Data



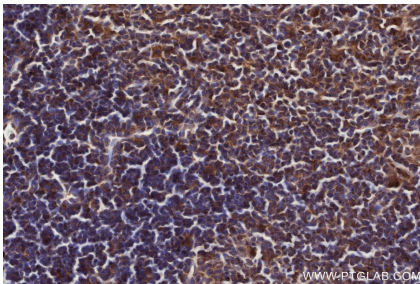
Immunohistochemical analysis of paraffin-embedded human placenta tissue slide using KHC2732 (RAB2B IHC Kit).



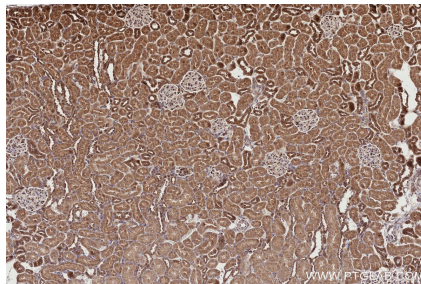
Immunohistochemical analysis of paraffin-embedded mouse kidney tissue slide using KHC2732 (RAB2B IHC Kit).



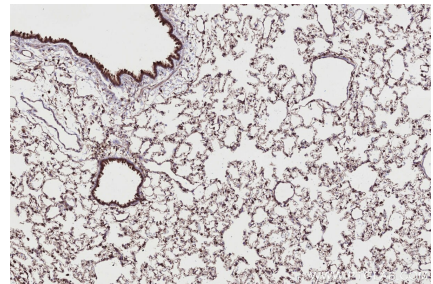
Immunohistochemical analysis of paraffin-embedded mouse lung tissue slide using KHC2732 (RAB2B IHC Kit).



Immunohistochemical analysis of paraffin-embedded mouse thymus tissue slide using KHC2732 (RAB2B IHC Kit).



Immunohistochemical analysis of paraffin-embedded rat kidney tissue slide using KHC2732 (RAB2B IHC Kit).



Immunohistochemical analysis of paraffin-embedded rat lung tissue slide using KHC2732 (RAB2B IHC Kit).