

IHCeasy[®] RSPH1 Ready-To-Use IHC Kit

Catalog Number: **KHC2745**

General Information

Sample type:
FFPE tissue
Cited sample type:
Reactivity:
Human, Mouse, Rat
Cited Reactivity:

Assay type:
Immunohistochemistry
Primary antibody type:
Rabbit Polyclonal
Secondary antibody type:
Polymer-HRP-Goat anti-Rabbit

Kit Component

Component	Size	Concentration
Antigen Retrieval Buffer	100 mL	50×
Washing Buffer	100 mL ×2	20×
Blocking Buffer	5 mL	RTU
Primary Antibody	5 mL	RTU
Secondary Antibody	5 mL	RTU
Chromogen Component A	0.2 mL	RTU
Chromogen Component B	4 mL	RTU
Signal Enhancer	5 mL	RTU
Counter Staining Reagent	5 mL	RTU
Mounting Media	5 mL	RTU
Control Slide	1 slide (Optional)	FFPE
Datasheet	1 Copy	
Manual	1 Copy	

Storage Instructions

All the reagents are stored at 2-8°C. The kit is stable for 6 months from the date of receipt.

Background

RSPH1 (Radial Spoke Head Component 1) encodes a male mid-meiotic chromosome-associated acidic protein involved in the structure and function of cilia and flagella. Pathogenic variants of RSPH1 lead to impaired spermatocyte motility and aberrant flagellar composition, which further contribute to male infertility. In addition to this, mutations in the RSPH1 gene lead to primary ciliary dyskinesia-24 (PCD-24), an autosomal recessive disorder that affects the motor function of cilia and flagella.

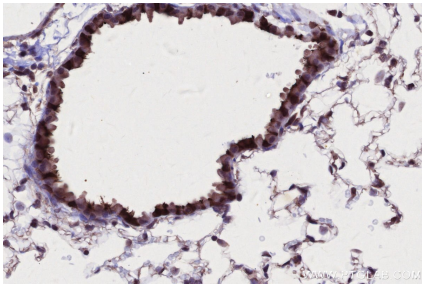
Synonyms

Cancer/testis antigen 79, CT79, Male meiotic metaphase chromosome-associated acidic protein, Meichroacidin, Radial spoke head 1 homolog

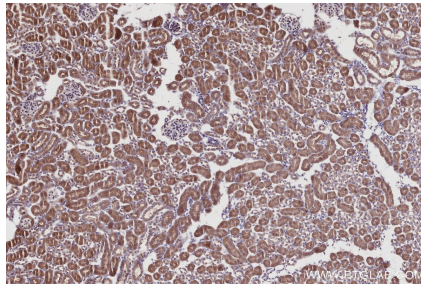
For technical support and original validation data for this product please contact:
T: 1 (888) 4PTGLAB (1-888-478-4522) (toll free in USA), or 1(312) 455-8498 (outside USA)
E: proteintech@ptglab.com
W: ptglab.com

This product is exclusively available under Proteintech Group brand and is not available to purchase from any other manufacturer.

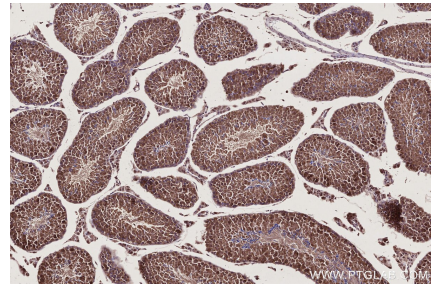
Selected Validation Data



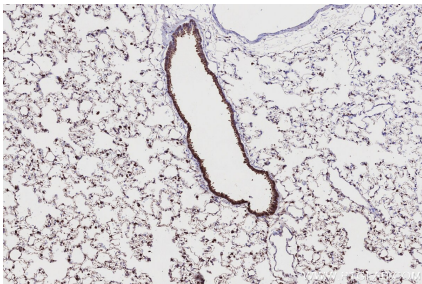
Immunohistochemical analysis of paraffin-embedded mouse lung tissue slide using KHC2745 (RSPH1 IHC Kit).



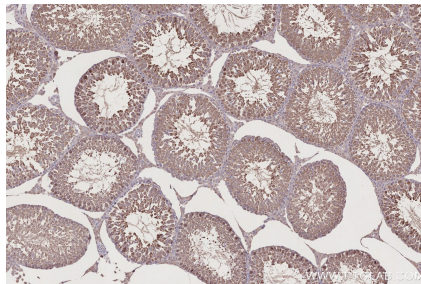
Immunohistochemical analysis of paraffin-embedded mouse kidney tissue slide using KHC2745 (RSPH1 IHC Kit).



Immunohistochemical analysis of paraffin-embedded mouse testis tissue slide using KHC2745 (RSPH1 IHC Kit).



Immunohistochemical analysis of paraffin-embedded rat lung tissue slide using KHC2745 (RSPH1 IHC Kit).



Immunohistochemical analysis of paraffin-embedded rat testis tissue slide using KHC2745 (RSPH1 IHC Kit).