

IHC*easy* DOCK2 Ready-To-Use IHC Kit

Catalog Number: **KHC2747**

General Information

Sample type:
FFPE tissue
Cited sample type:
Reactivity:
Human, Mouse, Rat
Cited Reactivity:

Assay type:
Immunohistochemistry
Primary antibody type:
Mouse Monoclonal
Secondary antibody type:
Polymer-HRP-Goat anti-Mouse

Kit Component

Component	Size	Concentration
Antigen Retrieval Buffer	100 mL	50×
Washing Buffer	100 mL ×2	20×
Blocking Buffer	5 mL	RTU
Primary Antibody	5 mL	RTU
Secondary Antibody	5 mL	RTU
Chromogen Component A	0.2 mL	RTU
Chromogen Component B	4 mL	RTU
Signal Enhancer	5 mL	RTU
Counter Staining Reagent	5 mL	RTU
Mounting Media	5 mL	RTU
Control Slide	1 slide (Optional)	FFPE
Datasheet	1 Copy	
Manual	1 Copy	

Storage Instructions

All the reagents are stored at 2-8°C. The kit is stable for 6 months from the date of receipt.

Background

DOCK2, also named as KIAA0209, belongs to the DOCK family. It is involved in cytoskeletal rearrangements required for lymphocyte migration in response of chemokines. DOCK2 activates RAC1 and RAC2 small GTPases, probably by functioning as a guanine nucleotide exchange factor (GEF), which exchanges bound GDP for free GTP. DOCK2 may also participate in IL2 transcriptional activation via the activation of RAC2.

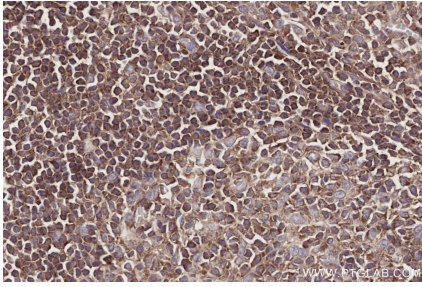
Synonyms

KIAA0209

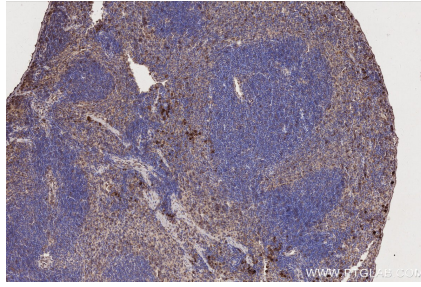
For technical support and original validation data for this product please contact:
T: 1 (888) 4PTGLAB (1-888-478-4522) (toll free in USA), or 1(312) 455-8498 (outside USA)
E: proteintech@ptglab.com
W: ptglab.com

This product is exclusively available under Proteintech Group brand and is not available to purchase from any other manufacturer.

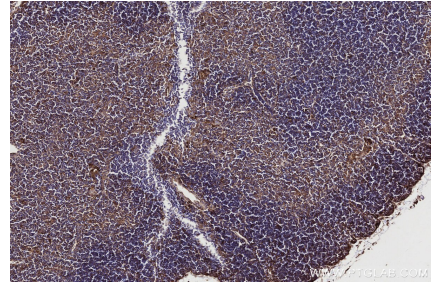
Selected Validation Data



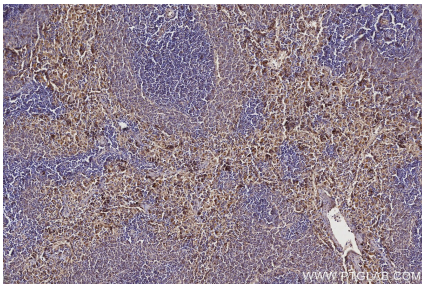
Immunohistochemical analysis of paraffin-embedded human appendicitis tissue slide using KHC2747 (DOCK2 IHC Kit).



Immunohistochemical analysis of paraffin-embedded mouse spleen tissue slide using KHC2747 (DOCK2 IHC Kit).



Immunohistochemical analysis of paraffin-embedded mouse thymus tissue slide using KHC2747 (DOCK2 IHC Kit).



Immunohistochemical analysis of paraffin-embedded rat spleen tissue slide using KHC2747 (DOCK2 IHC Kit).