

IHC*easy* RDH5 Ready-To-Use IHC Kit

Catalog Number: **KHC2753**

General Information

Sample type:
FFPE tissue
Cited sample type:
Reactivity:
Human, Mouse
Cited Reactivity:

Assay type:
Immunohistochemistry
Primary antibody type:
Rabbit Polyclonal
Secondary antibody type:
Polymer-HRP-Goat anti-Rabbit

Kit Component

Component	Size	Concentration
Antigen Retrieval Buffer	100 mL	50×
Washing Buffer	100 mL ×2	20×
Blocking Buffer	5 mL	RTU
Primary Antibody	5 mL	RTU
Secondary Antibody	5 mL	RTU
Chromogen Component A	0.2 mL	RTU
Chromogen Component B	4 mL	RTU
Signal Enhancer	5 mL	RTU
Counter Staining Reagent	5 mL	RTU
Mounting Media	5 mL	RTU
Control Slide	1 slide (Optional)	FFPE
Datasheet	1 Copy	
Manual	1 Copy	

Storage Instructions

All the reagents are stored at 2-8°C. The kit is stable for 6 months from the date of receipt.

Background

RDH5, also named as RDH1, SDR9C5 and HSD17B9, belongs to short-chain dehydrogenases/reductases (SDR) family. RDH5 catalyzes the oxidation of cis-isomers of retinol in an NAD-dependent manner for the final step in the biosynthesis of 11-cis retinaldehyde. Mutations in this gene are associated with fundus albipunctatus, an autosomal recessive eye disease characterized by stationary night blindness and accumulation of white spots in the retina.

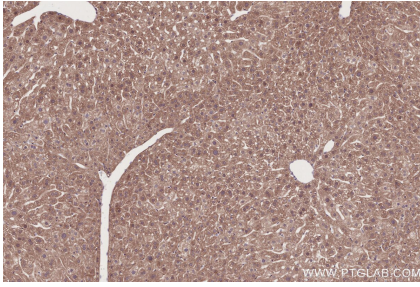
Synonyms

11 cis RDH, 11-cis RDH, 11-cis retinol dehydrogenase, 11-cis RoDH, 9-cis retinol dehydrogenase

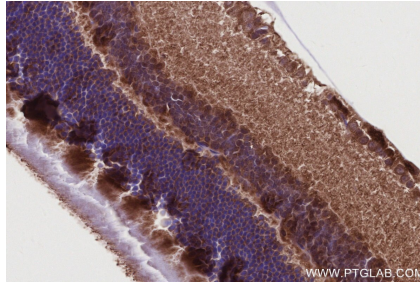
For technical support and original validation data for this product please contact:
T: 1 (888) 4PTGLAB (1-888-478-4522) (toll free in USA), or 1(312) 455-8498 (outside USA)
E: proteintech@ptglab.com
W: ptglab.com

This product is exclusively available under Proteintech Group brand and is not available to purchase from any other manufacturer.

Selected Validation Data



Immunohistochemical analysis of paraffin-embedded mouse liver tissue slide using KHC2753 (RDH5 IHC Kit).



Immunohistochemical analysis of paraffin-embedded mouse eye tissue slide using KHC2753 (RDH5 IHC Kit).