

IHC*easy* PCSK5 Ready-To-Use IHC Kit

Catalog Number: **KHC2756**

General Information

Sample type:
FFPE tissue
Cited sample type:
Reactivity:
Human, Rat
Cited Reactivity:

Assay type:
Immunohistochemistry
Primary antibody type:
Rabbit Polyclonal
Secondary antibody type:
Polymer-HRP-Goat anti-Rabbit

Kit Component

Component	Size	Concentration
Antigen Retrieval Buffer	100 mL	50×
Washing Buffer	100 mL ×2	20×
Blocking Buffer	5 mL	RTU
Primary Antibody	5 mL	RTU
Secondary Antibody	5 mL	RTU
Chromogen Component A	0.2 mL	RTU
Chromogen Component B	4 mL	RTU
Signal Enhancer	5 mL	RTU
Counter Staining Reagent	5 mL	RTU
Mounting Media	5 mL	RTU
Control Slide	1 slide (Optional)	FFPE
Datasheet	1 Copy	
Manual	1 Copy	

Storage Instructions

All the reagents are stored at 2-8°C. The kit is stable for 6 months from the date of receipt.

Background

PC5, a mammalian kex2-like processing endoprotease, mediates posttranslational endoproteolytic processing for several integrin alpha subunits. It has been identified in rat and mouse endocrine and neuroendocrine tissues, and is encoded by multiple mRNAs that generate two splice variant isoforms referred to as PC5A (102KDa) and PC5B (207KDa). PC5A is smaller than PC5B and it can be processed into two forms (117 kDa and 65 kDa) in neuronal cells.

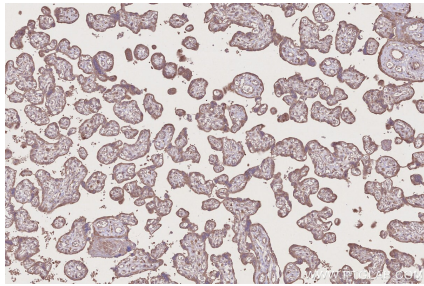
Synonyms

PC6, EC:3.4.21.-, hPC6, PC5, PC6A

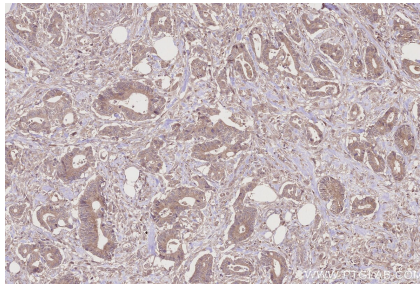
For technical support and original validation data for this product please contact:
T: 1 (888) 4PTGLAB (1-888-478-4522) (toll free in USA), or 1(312) 455-8498 (outside USA)
E: proteintech@ptglab.com
W: ptglab.com

This product is exclusively available under Proteintech Group brand and is not available to purchase from any other manufacturer.

Selected Validation Data



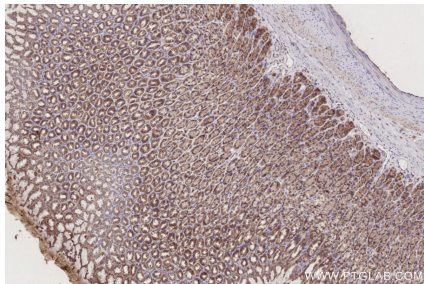
Immunohistochemical analysis of paraffin-embedded human placenta tissue slide using KHC2756 (PCSK5 IHC Kit).



Immunohistochemical analysis of paraffin-embedded human rectal cancer tissue slide using KHC2756 (PCSK5 IHC Kit).



Immunohistochemical analysis of paraffin-embedded rat adrenal gland tissue slide using KHC2756 (PCSK5 IHC Kit).



Immunohistochemical analysis of paraffin-embedded rat stomach tissue slide using KHC2756 (PCSK5 IHC Kit).